

**e-BOOK ON PALLIATIVE CARE GUIDELINES FOR  
COVID-19 PANDEMIC**

*'Not all people can be cured. But all people can be comforted'*

**Edited by**

**Task Force in Palliative Care (PallicovidKerala)**

**KERALA**

**April 2020**

# CONTENTS

<b>Advisors and Contributors .....</b>	<b>3</b>
<b>Preface .....</b>	<b>5</b>
<b>Relevance of Palliative Care in COVID-19 .....</b>	<b>6</b>
<i>Dr. Rajashree K.C, Dr. Chitra Venkateswaran</i>	
<b>Communication Tips in COVID-19 .....</b>	<b>8</b>
<i>Dr. Seema Rao, Dr. Poornima Sunder</i>	
<b>Palliative Care Support at all levels of Triaging Process of Government of Kerala .....</b>	<b>11</b>
<i>Dr. Charu Singh, Dr. Sunitha Daniel, Dr. Chitra Venkateswaran</i>	
<b>Symptom Management: Breathlessness - Algorithm 1.....</b>	<b>12</b>
<i>Dr. Sunitha M Daniel</i>	
<b>Symptom Management: Oropharyngeal / Respiratory Secretions - Algorithm 2 .....</b>	<b>15</b>
<i>Dr. Vineetha Rijju</i>	
<b>Symptom Management: Agitation and Delirium - Algorithm 3.....</b>	<b>17</b>
<i>Dr. Shoba Nair</i>	
<b>Guidelines for Psychological Interventions for COVID-19.....</b>	<b>19</b>
<i>Dr. Seema Rao, Dr. Poornima Sunder</i>	
<b>Psychosocial Interventions for COVID-19 - Algorithm 4.....</b>	<b>21</b>
<i>Dr. Poornima Sunder, Anupama Prabhu, Uma Parameswaran, Dr. Seema Rao</i>	
<b>Management of Ethical Issues - Algorithm 5.....</b>	<b>22</b>
<i>Dr. Shoba Nair</i>	
<b>Goals of Care Discussion Framework - Algorithm 6.....</b>	<b>25</b>
<i>Dr. Seema Rao</i>	
<b>End-of-life care and Nursing issues in managing COVID-19 patients.....</b>	<b>27</b>
<i>Dr. Rajashree K.C, Dr. Shoba Nair</i>	
<b>Burn-out and Interventions .....</b>	<b>34</b>
<i>Dr. Seema Rao, Dr. Poornima Sunder, Dr. Odette Spruijt, Dr. Chitra Venkateswaran</i>	
<b>Grief and Bereavement in COVID-19 - Algorithm 7 .....</b>	<b>37</b>
<i>Dr. Seema Rao, Dr. Poornima Sunder, Dr. Odette Spruijt, Dr. Mhoira Leng, Dr. Chitra Venkateswaran</i>	
<b>Psychosocial interventions for COVID-19- Supporting document .....</b>	<b>40</b>
<i>Dr. Poornima Sunder, Anupama Prabhu, Uma Parameswaran</i>	
<b>Spiritual care in COVID-19 pandemic – Supporting document.....</b>	<b>50</b>
<i>Dr. Odette Spruijt, Dr. Seema Rao, Dr. Chitra Venkateswaran</i>	
<b>Palliative Home Care in times of Covid-19 &amp; Future Pandemics .....</b>	<b>53</b>
<i>Dr. Biju Raghavan</i>	
<b>End-of-life care at Home for COVID-19 patients .....</b>	<b>58</b>
<i>Dr. Sunil Kumar M M</i>	
<b>Links for FAQ's and Myth Busters .....</b>	<b>59</b>
<i>Dr. Poornima Sunder, Anupama Prabhu, Uma Parameswaran</i>	
<b>Links for Additional Reading.....</b>	<b>62</b>
<i>Dr. Sunitha M Daniel</i>	

# Advisors and Contributors

## Advisors:

### **Dr. M.R. Rajagopal**

Director,  
Trivandrum Institute of Palliative Sciences,  
WHO Collaborating Centre for Training and Policy on  
Access to Pain Relief  
Chairman – Pallium India  
Thiruvananthapuram, Kerala

### **Dr. K. Suresh Kumar**

Director,  
WHO Collaborating Centre for Community Participation in  
Palliative Care and Long-Term Care  
Technical Advisor -Institute of Palliative Medicine  
Calicut, Kerala

## Contributors:

### **Dr. Chitra Venkateswaran**

Professor and Head, Department of Psychiatry  
Senior Consultant in Palliative Care and Psycho Oncology,  
BC MCH, Tiruvalla, Kerala, India  
Clinical Director - Mehac Foundation, Kochi, Kerala

### **Dr. Shoba Nair**

MBBS MD MRCP (Edinburgh) MSc (Australia)  
Current PhD student, Lancaster University, UK  
Professor, Department of Pain and Palliative Medicine  
Amrita Institute of Medical Sciences, Kochi, Kerala

### **Dr. Rajashree. K.C**

MBBS, MD (Anaesthesiology)  
Fellowship in Palliative Medicine  
Certificate Course on Mental Health in Palliative Care  
Director - Academic Wing for Professional Certificate  
Programs, Trivandrum Institute of Palliative Science,  
Thiruvananthapuram  
Asst. Professor- Amrita Institute of Medical Sciences, Kochi  
Palliative Care Trainer - Institute of Palliative Care,  
Thrissur, Kerala

### **Dr. Sunitha M Daniel**

MRCP (Gen. Med) MRCP (Pall .Med)  
Specialist Medical Officer, Palliative Medicine  
General Hospital, Ernakulam, Kochi, Kerala  
Locum Consultant Palliative medicine,  
Holt Doctors, UK

### **Dr. Sunil Kumar M M**

MBBS, DPPM, MSc Palliative Medicine (Cardiff, UK)  
Additional Director  
Trivandrum Institute of Palliative Sciences  
Thiruvananthapuram, Kerala

### **Dr. Vineetha Rijju**

MBBS , BCCPM, FPM , MSc Pall Med ( Cardiff)  
Associate Specialist in Medical Oncology  
Aster Medcity , Kochi, Kerala

### **Dr. Seema Rao**

Consultant, Department of Palliative Medicine and  
Supportive Care,  
Kasturba Medical College and Hospital, Manipal  
Honorary Tutor, School of Medicine, Cardiff (UK)

### **Dr. Poornima Sunder**

Consultant Psychiatrist  
Mehac Foundation, Kochi, Kerala

### **Dr. Athul Joseph Manuel**

Medical Officer,  
Dept of Palliative Care,  
General Hospital Ernakulam.  
Nodal Officer, Covid19 Tele Health Center, Ernakulam

**Dr. Charu Singh**

Professor, Anesthesiology and Palliative Medicine  
MD Anesthesiology  
Fellowship in Critical Care, Benaras Hindu University  
Diploma in Palliative Medicine, Cardiff University  
Graduate Certificate in Health (Palliative Medicine),  
Flinders University, Adelaide, 3T course in Bioethics,  
UNESCO Chair, Haifa

**Dr. Mhoira Leng**

Palliative Care Physician FRCP (Ed and Glas)  
Makerere University and Palliative care Education and  
Research Consortium, Uganda,  
Cairdeas International Palliative Care Trust, UK

**Ms. Anupama Prabhu**

Clinical Psychologist  
Mehac Foundation, Kochi, Kerala

**Dr. Biju Raghavan**

Sr. Consultant and Head  
Pain and Palliative Medicine  
Rajagiri Hospital, Aluva, Ernakulam, Kerala

**Dr. Geetha Vijay**

MBBS, PG Diploma in Palliative Care  
General Hospital, Ernakulam, Kerala

**Dr. Odette Spruijt**

MBChB, Dip. Obs., FRChPM  
Associate Professor, Palliative Medicine  
Western Health Network  
Melbourne, Victoria, Australia

**Ms. Uma Parameswaran**

Clinical Psychologist, MeHelp Project  
Mehac Foundation, Kochi, Kerala

**Supported by:****Dr. Samin Sameed**

MBBS, MD  
Psychiatrist, Urban Health Mission

**Dr. Hariprasad PG**

Associate Professor  
Department of pediatrics  
Government Medical College, Kalamassery  
Ernakulam, Kerala

**Ms. Smriti Rana**

MSc -Integrative and Holistic Psychological Counselling  
Director-Programmes Pallium India  
Thiruvananthapuram, Kerala

**Dr. Harimohan Narayanan**

Associate Consultant,  
Pain and Palliative Care,  
VPS Lakeshore Hospital, Ernakulam, Kerala

**Ms. Bhavana Issar**

Founder and CEO, Caregiver Saathi,  
Sambhaavna partners  
MBA, Certified Process Facilitator and  
Gestalt OD Practitioner

**Dr. Deepak Varughese**

MBBS, MD, CCPPM  
Public Health Consultant  
Trivandrum Institute of Palliative Sciences  
Pallium India, Thiruvananthapuram, Kerala

## **Preface**

COVID-19 pandemic has hit the world causing major impacts on health and economy. In many European countries, it has resulted in challenging scenarios of an ethical dilemma to the professionals. Healthcare systems and healthcare professionals are stressed in managing an influx of affected patients as the nCov19 crisis is unpredictable. The disease presents as a severe acute care crisis of unknown duration. Potentially hundreds of thousands of people get sick, some critically, and tens of thousands may die.

In this context, the usual concerns of palliative care like symptom management, goals of care setting, advance care planning, and support for patients and caregivers, all aiming at enhancing the quality of life, seem gloomy. However, Palliative Care has never been more important!

The Palliative Care team in Kerala has formed a task force to develop guidelines to support the Government initiative in combating COVID-19 crisis. Dr. Rajagopal and Dr. Suresh Kumar are the two experts from Palliative Care in the advisory body to the Government. The present document is the product of valuable inputs and discussion among national and overseas faculty.

The task force has immense pleasure in bringing the document as an e-book to facilitate the health care professionals in their tireless battle against the pandemic.

# Relevance of Palliative Care in COVID-19

*Dr. Rajashree K.C, Dr. Chitra Venkateswaran*

The coronavirus presents to the health care system an acute and severe crisis with so many uncertainties especially related to the time boundary. We are witnessing a crisis in which potentially millions may get sick, some will get critically ill, of which many may die. WHO is reporting the average death rate from COVID-19 is between 2% and 4%, with a higher rate of 15 to 22%.<sup>1</sup>

Those who are elderly, frail, and/or with underlying chronic or serious illness, children, migrants, those with disabilities and other vulnerable groups are most at risk from the novel coronavirus; who are already palliative care's core patient population<sup>1</sup>. Utilizing the unique skills and strengths found in palliative care must be a part of care for COVID patients. While the biological and physical repercussions of the disease get disproportionately more attention, the mental health aspects also demand dynamic attention. Epidemics have also imparted a vital realization that the absence of effective mental health and psychosocial support system increases risks of psychological distress and progression to psychopathology.

The stigma of the illness with its resultant labeling, stereotyping, and discriminating, the lack of knowledge about the disease, the uncertainties of the outbreak, the constant media reactions, and the false information all add to the distress. In a country like India, there are added worries of social and economic disruption that can further complicate mental health problems<sup>2</sup>.

Fear of and worries about infecting family and friends, especially the elderly are magnified among healthcare workers in isolation and quarantine. The pandemic has kicked off a grieving process in the community, in anticipation of the perceived collective loss and death, increasing the vulnerability to grief and burn out<sup>3</sup>.

**Palliative care with its biopsychospiritual approach focuses on enhancing the quality of life of the patients with serious health-related suffering and their family members. It essentially gives thrust to symptom control, empathic communication, psychosocial support, end of life care and bereavement care.** It has proven as a cost-effective model for caring for patients with long-term illnesses. The network of professionals and the trained volunteers in Kerala has been successful in bringing the Palliative Care coverage of the State (40%) above the global average (14%). Kerala is the first among the Indian States to bring a Palliative Care Policy across the three-tier system of health care institutions of the State Government.

The values of compassion and total care that palliative care brings if required as an essential component in health care and the community in this humanitarian crisis.

## References:

- J M Ballentine. The Role of Palliative Care in a COVID-19 Pandemic. 2020. <https://csupalliativecare.org/palliative-care-and-covid-19/> Accessed on 03/04/2020
- Li W, Yang Y, Liu Z-H, Zhao Y-J, Zhang Q, Zhang L, et al. Progression of Mental Health Services during the COVID-19 Outbreak in China. *Int J Biol Sci.* 2020;16(10):1732–8.
- Ho CS, Chee CY, Ho RC. Mental Health Strategies to Combat the Psychological Impact of COVID-19 Beyond Paranoia and Panic. 2020;6.
- Kerala State Policy on Palliative Care. 2019. <https://palliumindia.org/cms/wp-content/uploads/2019/12/Kerala-Palliative-care-policy-Eng-2019-Dec.pdf>. Accessed on 03/04/2020

# Communication Tips in COVID-19

*Dr. Seema Rao, Dr. Poornima Sunder*

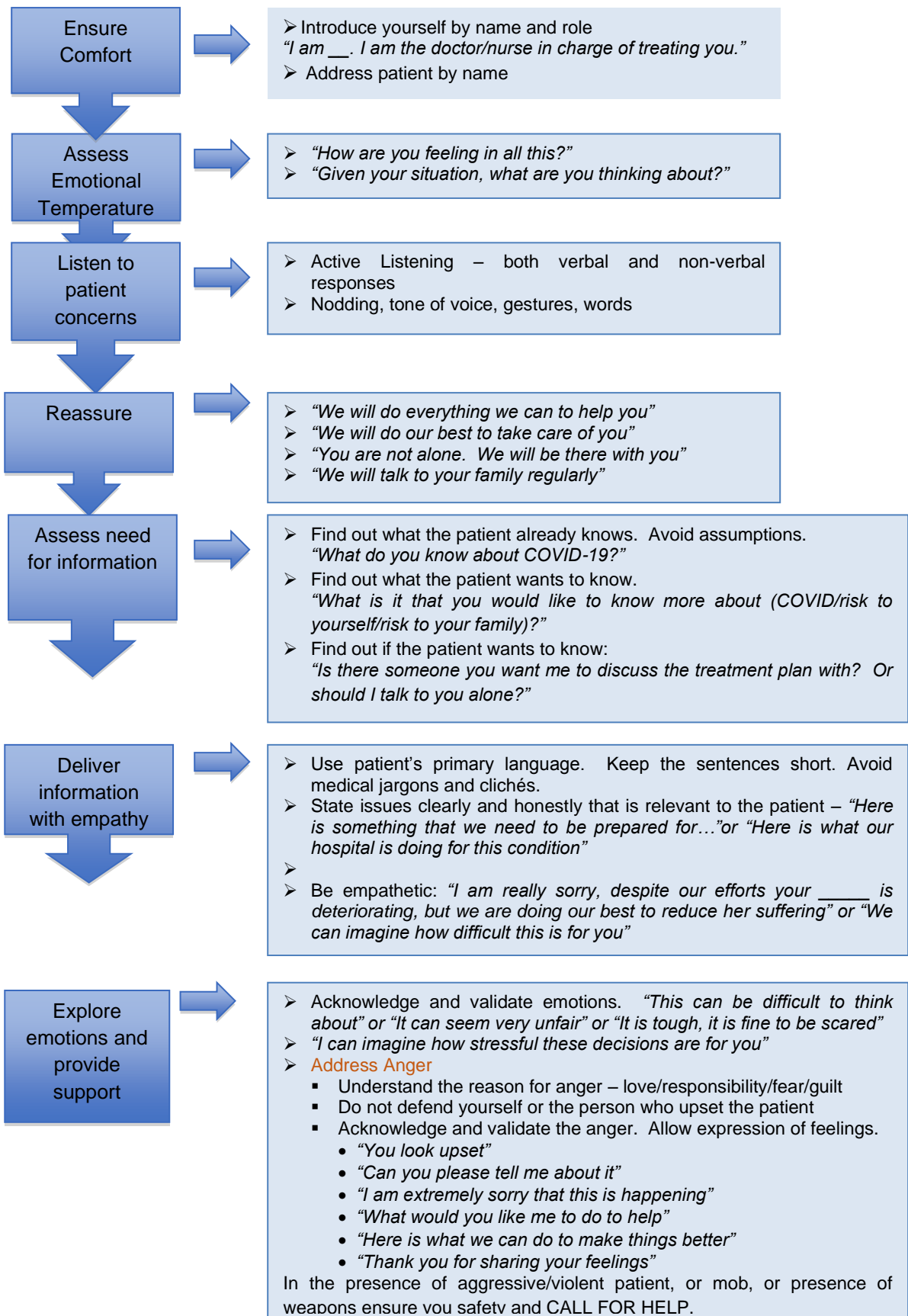
Physicians across specialties find communicating with patients about serious illness challenging. Numerous studies have proven physicians' discomfort stems from an inability to handle strong emotions and lack of time<sup>1</sup>. The current COVID-19 pandemic has amplified these challenges, even for those familiar with these conversations.

The goals of patient-family-physician communication in this scenario would include:

- a) To share information in a clear, timely and complete manner to empower decision-making.
- b) To treat patients and families with dignity and compassion by honoring the patient/family values and providing care that is in concordance with those values.
- c) To enhance participation and collaboration of the patients/families with healthcare providers and state/local policies.

The brief outline will provide basic communication tips for frontline healthcare workers dealing with the COVID-19 pandemic. Often these communications are done face-to-face with personal protective equipment or over the phone/Skype/WhatsApp/teleconferencing/FaceTime.



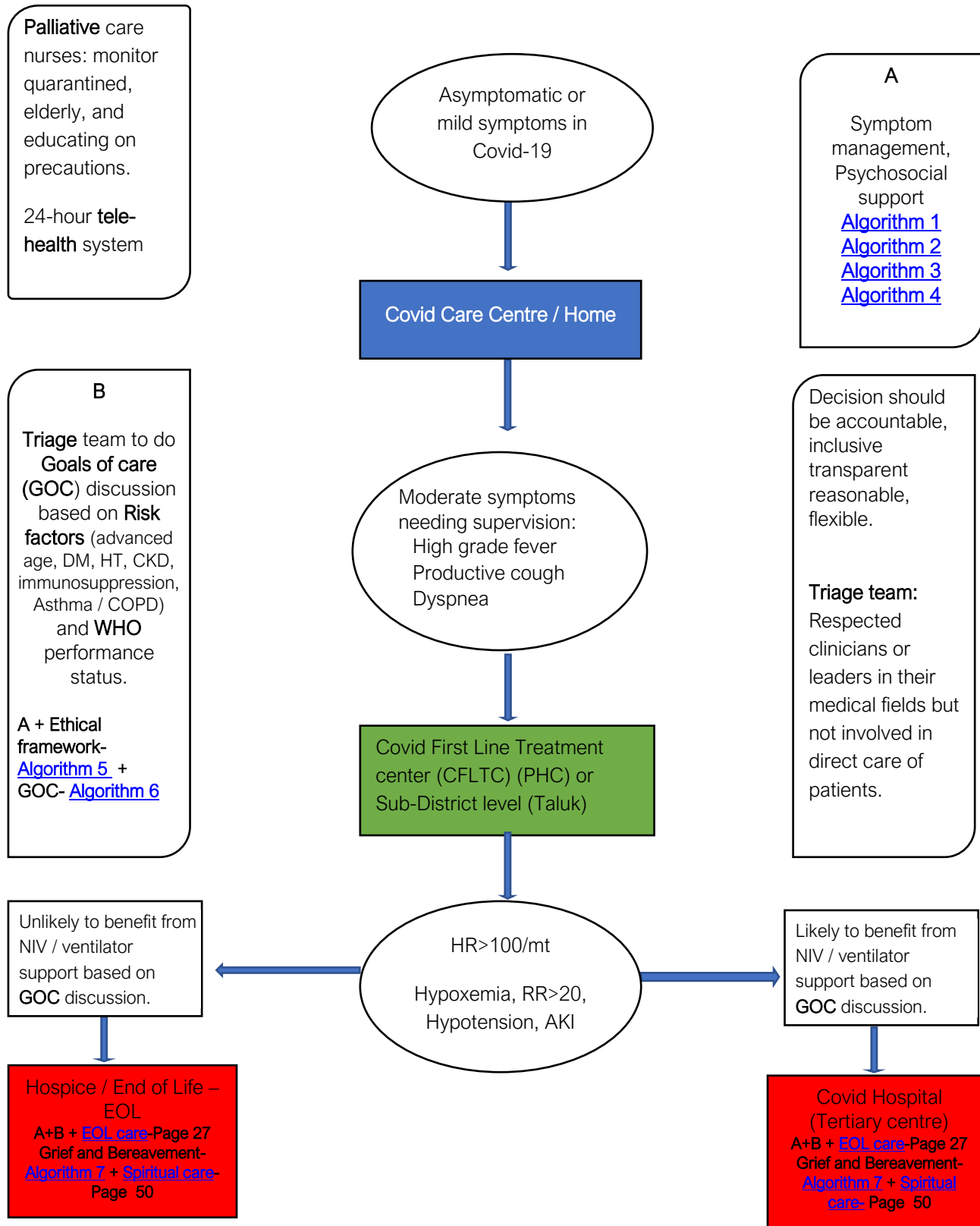


## References:

- Curtis JR, Patrick DL, Caldwell ES, Collier AC. Why don't patients and physicians talk about end-of-life care?: Barriers to communication for patients with acquired immunodeficiency syndrome and their primary care clinicians. Arch Intern Med. 2000;
- <https://aphn.org/wp-content/uploads/2020/04/SICP-COVID19-communication-toolkit.pdf>
- <https://annals.org/aim/fullarticle/2764314/communication-skills-age-covid-19>
- <https://www.vitaltalk.org/guides/covid-19-communication-skills/>

# Palliative Care Support at all levels of Triageing Process of Government of Kerala

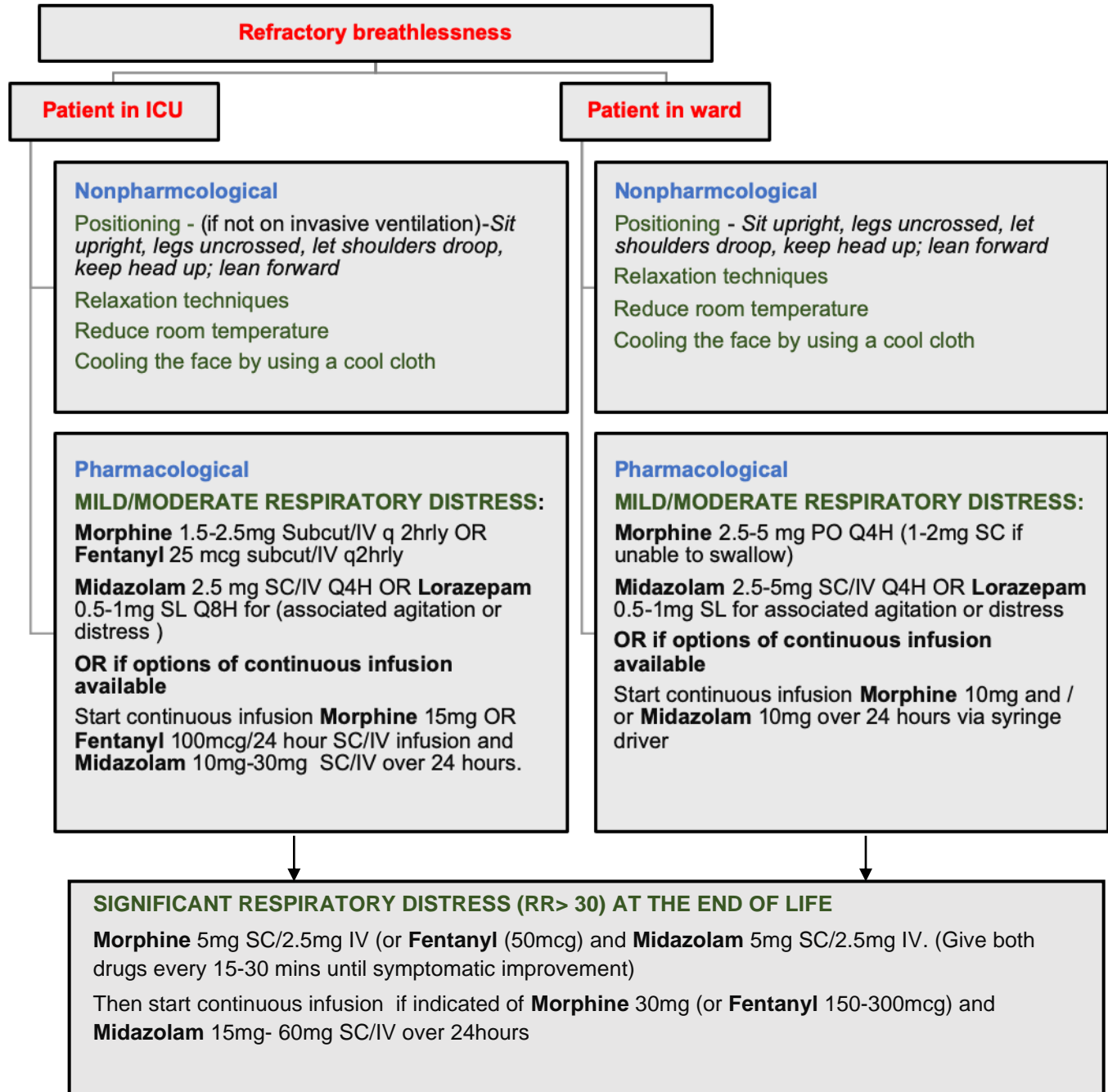
Dr. Charu Singh, Dr. Sunitha Daniel, Dr. Chitra Venkateswaran



# Symptom Management: Breathlessness - Algorithm 1

Dr. Sunitha M Daniel

These guidelines can be used along with active treatment for COVID-19 including any correctable problems like superadded infection or bronchospasm. They can be continued for symptom management at the end of life.



## Notes:

- Start an antiemetic - Metoclopramide 10 mg Q8H or Haloperidol 0.5-1mg daily (haloperidol is more suitable in patients with agitation) for the first 3 days of opioid therapy) if indicated. Note: Extrapyramidal side effects are extremely rare at this dose).
- Always start a stimulant laxative like Tab Bisacodyl 10 mg PO at bed-time **on the same day of starting morphine** and ensure regular bowel movement.
- Fentanyl or Morphine can be used depending on availability
- Fentanyl is preferred if creatinine > 2mg/dl
- Oral Morphine can be administered in the same dose per rectally if the patient unable to swallow and parenteral morphine is not available.
- If symptoms not settling contact a specialist in palliative care, critical care, or respiratory medicine as advised.
- Morphine conversion: 60 mg oral morphine is equivalent to 25 microgram/ hour of Fentanyl

## Glossary

- 1) **Refractory breathlessness:** Breathlessness not improving despite optimal medical management
- 2) **Non-pharmacological interventions:** Treatments that do not use medications to alleviate symptoms.
- 3) **Subcut:** Subcutaneous(under the skin) route of drug delivery In this type of **injection**, a short needle is used to **inject** a drug into the tissue layer between the skin and the muscle. (eg like insulin)
- 4) **SL:** Sublingual (under the tongue) route of drug delivery
- 5) **Continuous infusion:** Continuous dosage of medication given parenterally either subcutaneously or intravenously.
- 6) **Extrapyramidal side effects:** Symptoms (including tremor, slurred speech, akathisia, dystonia, anxiety, distress, and paranoia) that are primarily associated with or are unusual reactions to neuroleptic (antipsychotic) medications.
- 7) **Antiemetic:** A drug used for preventing or alleviating nausea and vomiting.

## Guidelines for management of Cough in Covid-19 patients

### Cough Etiquettes

- Cover your face with a disposable tissue and discard it carefully. If using a handkerchief, wash it thoroughly with soap and water and dry
- Wash hands thoroughly with soap and water/ hand sanitizer

### Non- Pharmacological Measures

- Oral fluids, saline gargle, avoid smoking, home remedies like ginger and honey.

### Pharmacological Measures

- Dry cough – Refer to [PalliKare App](#)
- Productive cough – Refer to [Pallikare App](#)

### References:

- King S, Hanks GW, Ferro CJ, Chambers EJ (2011) A systematic review of opioid medication for those with moderate to severe cancer pain and renal impairment: a European palliative care research collaborative opioid guidelines project. Palliative Medicine, 25(5), 525-552.
- Palliative Care Expert Group (2010) Therapeutic guidelines: palliative care (Version 3), Melbourne: Therapeutic Guidelines Limited.
- Jennings AL, Davies AN, Higgins JP, Broadly K (2001). Opioids for the palliation of breathlessness in terminal illness. Cochrane Database of Systematic Reviews (CD002066).
- <http://nhs.palliativedrugs.com/fentanyl-transmucosal.html>
- England.nhs.uk. 2020. [online] Available at: <https://www.england.nhs.uk/coronavirus/wp-content/uploads/sites/52/2020/03/C0081-Speciality-guide-Palliative-care-and-coronavirus-FINAL-02.04.20.pdf> [Accessed 9 April 2020].

# Symptom Management: Oropharyngeal / Respiratory Secretions - Algorithm 2

Dr. Vineetha Rijju

Oro pharyngeal / Respiratory secretions symptom management

Pharmacological	<ul style="list-style-type: none"><li>•Glycopyrrolate 200-400mcg Q2-4H (IV/SC)</li><li>•Hyoscine Butylbromide 20-40mg Q2-4H (IV/SC)</li><li>•Atropine ophthalmic eye drops 1% 1-2 drops SL Q4H</li></ul>
Communication	<ul style="list-style-type: none"><li>•If patient is at home during end of life, the noisy breathing could be worrisome to family</li><li>•Communication with family is very important about what to expect</li></ul>
Volume	<ul style="list-style-type: none"><li>•Volume of intake by means of oral, ryles tube feed and IV infusions, contribute to increase in secretions</li><li>•Diuretics like Frusemide 40mg Q12-24H- if fluid overload is suspected</li><li>•Volume of RT feeds should be decreased</li></ul>
Non pharmacological	<ul style="list-style-type: none"><li>•Postural drainage- interval positioning of patient from side to side, with slight head end elevation helps to shift secretions to a towel at the angle of mouth</li><li>•Gentle oral suctioning (closed type)</li><li>•Chest physiotherapy (Huffing)</li></ul>

These simple guidelines can be used for patients with symptoms of noisy breathing due to increased broncho-pulmonary secretions or pooling of salivary secretions in hypopharynx during end of life. Antisecretory drugs only decrease further production of secretion.

The predominant pattern observed in COVID-19 patients is dry cough. However distressing symptoms can be observed in those patients with secondary bacterial infections / difficulty to clear secretions / positive fluid balance / heart failures/ at terminal phase (death rattle). Control of these secretions decreases the noisy breathing.

The risk of transmission is high for those who are in contact with secretions. Family and staff should be alerted to take necessary airborne precautions during aerosol generating procedures like \*Nebulisations and Chest physiotherapy, which are best avoided. MDIs are preferred over nebulisations. Surgical mask is recommended for non-intubated patients.

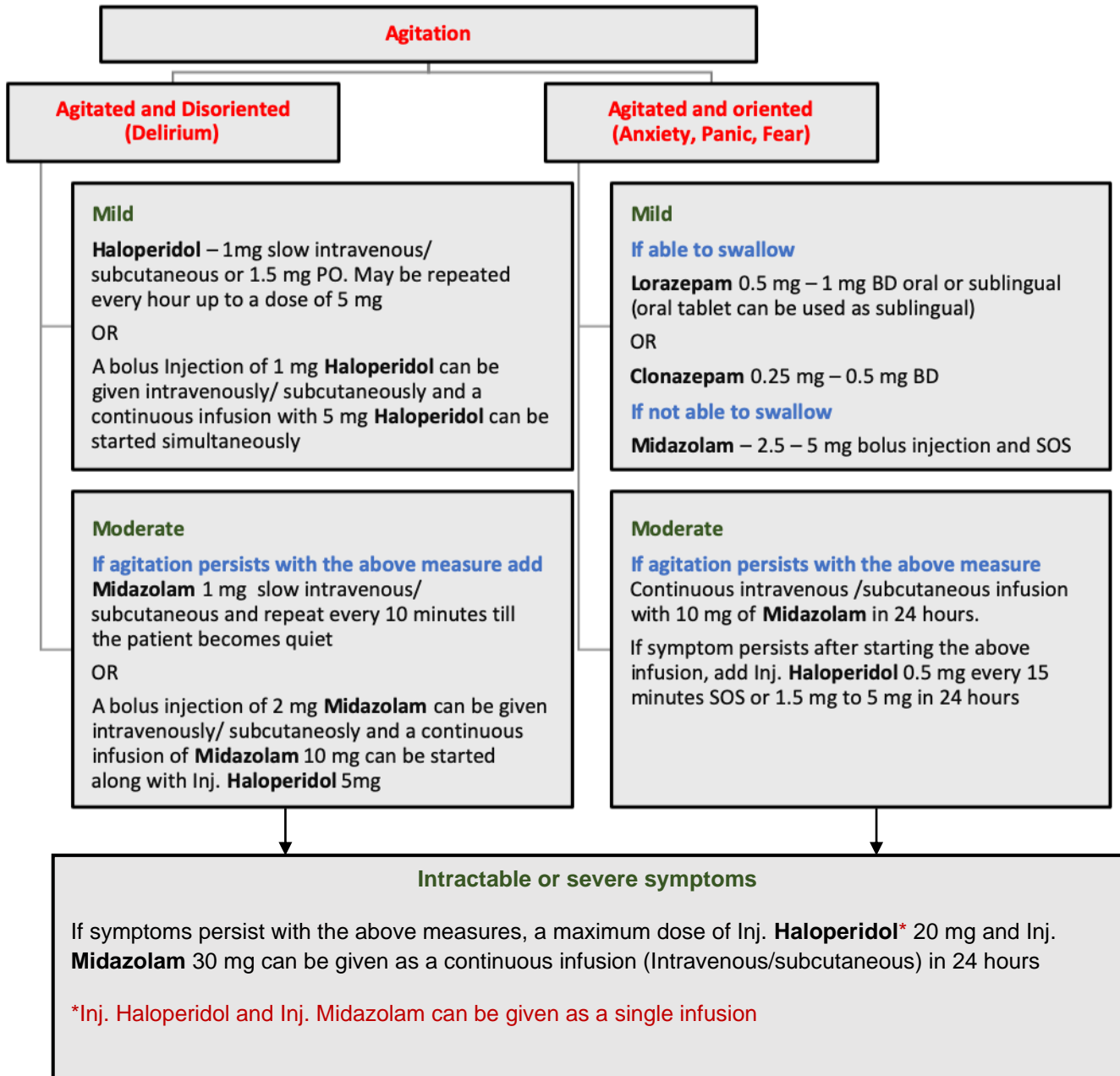
### **References:**

- Wildiers H, Menten J. Death rattle: prevalence, prevention, and treatment. *Journal of pain and symptom management*. 2002 Apr 1;23(4):310-7.
- Protus BM, Grauer PA, Kimbrel JM. Evaluation of atropine 1% ophthalmic solution administered sublingually for the management of terminal respiratory secretions. *American Journal of Hospice and Palliative Medicine*®. 2013 Jun;30(4):388-92.
- Clary PL, Lawson P. Pharmacologic pearls for end-of-life care. *American family physician*. 2009 Jun 15; 79(12):1059-65.



# Symptom Management: Agitation and Delirium - Algorithm 3

Dr. Shoba Nair



## General Principles

1. Agitation could be a common symptom in COVID-19 patients if the disease progress
2. The primary aim is to control agitation with minimum sedation
3. Agitation could be because of anxiety, stress or a sense of impending doom, where the patient is oriented. Agitation accompanied by disorientation is delirium.
4. If the patient develops refractory breathlessness, agitation and delirium, particularly at EOL, a combined infusion of Morphine, Midazolam and Haloperidol can be given.

## Guidelines

1. Assessment of agitation can be done by using a simple tool like 4AT delirium assessment tool. Alertness, abbreviated mental test, attention and acute changes are looked at in this tool.
2. Look for reversible causes of delirium like constipation, urinary retention, substance withdrawal, etc and correct where appropriate.
3. Administration of a Mini-Mental State Examination (MMSE) tool might not be possible in an acute state to identify whether the patient has decision-making capacity or not.
4. Agitation can be managed with pharmacological and non-pharmacological settings. The non-pharmacological management of agitation in COVID patients would include well lit, aerated room, as other measures like being with someone familiar might not be feasible in COVID -19 infection.
5. For intractable (severe) agitation higher doses mentioned in the algorithm or other medications can be given under the guidance of a palliative care specialist.

## References:

- Cohen-Mansfield J, Werner P. Management of verbally disruptive behaviors in nursing home residents. J Gerontology A Biol Sci Med Sci 1997;52A:M369-77.
- The 4AT~ test for detecting delirium in acute medical patients: a diagnostic accuracy study Health technology assessment, 2019, 23(40), 1-193 | added to CENTRAL: 31 January 2020 | 2020 Issue 01PubMed Embase
- NICE publishes first rapid COVID-19 guidelines | <https://www.nice.org.uk/news/article/nice-publishes-first-rapid-covid-19-guidelines>
- Formulary - © palliativedrugs.com. <https://www.palliativedrugs.com>

# Guidelines for Psychological Interventions for COVID-19

Dr. Seema Rao, Dr. Poornima Sunder

## First Level

Patients with confirmed COVID19 (moderate to severe illness)

Front line medical staff

Front line disease control staff

Front line management staff

Targeted Interventions	Target Population
Psychosocial Intervention (including stigma and spirituality)– <a href="#">Algorithm 4</a>  Grief and Bereavement – <a href="#">Algorithm 7</a>	Patients with confirmed COVID19 (moderate to severe illness)  Front line medical staff  Front line disease control staff  Front line management staff
Goals of care communication – <a href="#">Algorithm 6</a>	Front line medical staff
Stress and Burnout- <a href="#">Page- 34</a>	Front line medical staff  Front line disease control staff  Front line management staff

## Second Level

Patients with mild symptoms (fatigue, cough, fever)

Close contacts of confirmed patients

Patients in self-isolation or quarantined individuals

Targeted Interventions	Target Population
Psychosocial Intervention (emphasis on stigma, psychoeducation) – <a href="#">Algorithm 4</a>  Grief and Bereavement – <a href="#">Algorithm 7</a>  Stress and Burnout – <a href="#">Page 34</a>	Patients with mild symptoms (fatigue, cough, fever)  Close contacts of confirmed patients  Patients in self-isolation or quarantined individuals

### Third Level

People related to the first and second level (family members, colleagues, friends, volunteers, healthcare workers)

Targeted Interventions	Target Population
Psychosocial Intervention (emphasis on stigma, psychoeducation) - <a href="#">Algorithm 4</a>	People related to the first and second level
Grief and Bereavement- <a href="#">Algorithm 7</a>	

### Fourth Level

Residents of the geographic area affected by the epidemic

General public

Targeted Interventions	Target Population
Psychosocial Intervention (emphasis on stigma, psycho-education, social issues)- <a href="#">Algorithm 4</a>	Residents of the geographic area affected by the epidemic
Grief and Bereavement - <a href="#">Algorithm 7</a>	General public

### Who will provide?

Team – the primary care team offering possible interventions, standalone or along with the medical team (psychiatrist, psychologist, psychiatric nurse, psychiatric social worker)

Hotline team – volunteers and mental health workers with the help of specialists

### Method

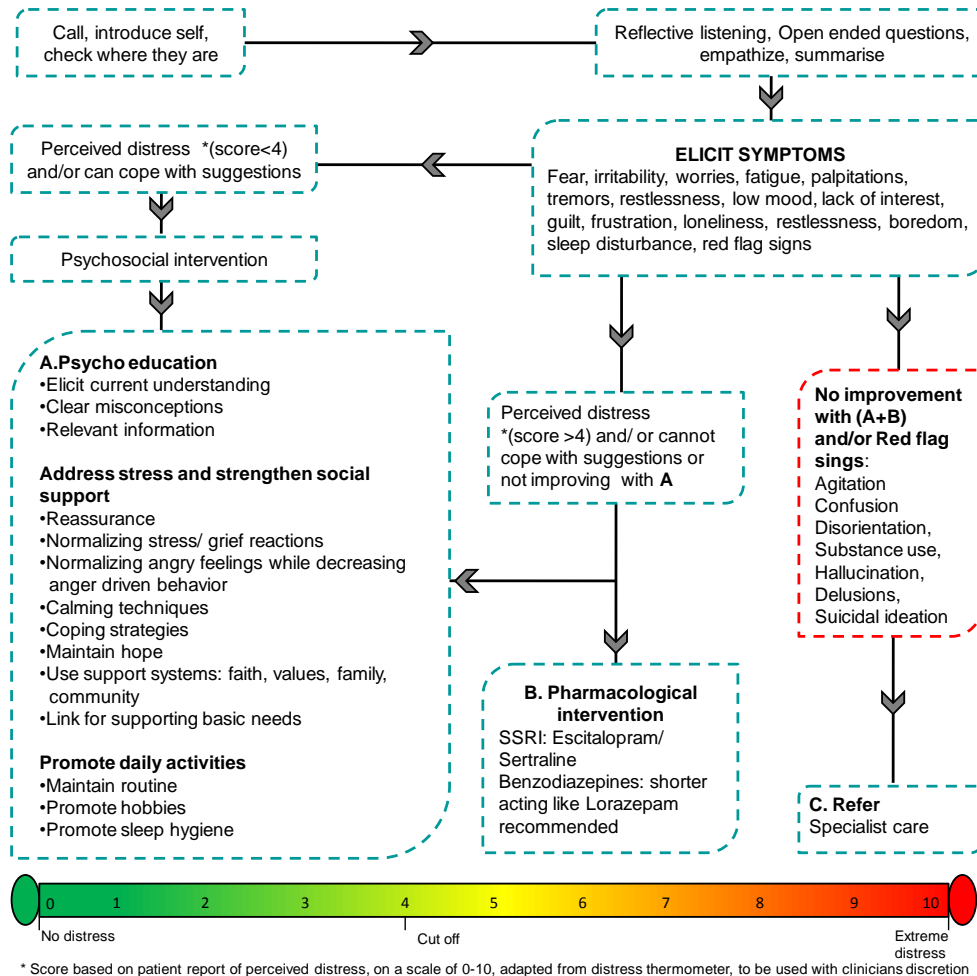
Face-to-face maintaining distance with full PPE whenever possible

Skype/Facetime/WhatsApp/Phone/Videoconferencing

# Psychosocial Interventions for COVID-19 - Algorithm 4

Dr. Poornima Sunder, Anupama Prabhu, Uma Parameswaran, Dr. Seema Rao

## PSYCHOSOCIAL INTERVENTIONS FOR COVID 19



**Follow-up recommendation:** follow up after 24 hours and then as required

### Do's:

- Be honest and trustworthy.
- Respect people's right to make their own decisions.
- Set aside your own biases and prejudices.
- Make it clear to affected people that even if they refuse help now, they can still access help in the future.
- Ensure confidentiality unless issues mentioned affect the safety of the individual or others
- Provide information about COVID 19. Be honest of what you don't know. This is a new virus that we are all learning about.

### Don'ts:

- Don't exploit your relationship as a helper.
- Don't make false promises or give false information.
- Don't exaggerate your skills.
- Don't force help on people and don't be intrusive or pushy.
- Don't pressure people to tell you their story.
- Don't judge the person for their actions or feelings
- Don't talk about yourself or personal issues or troubles.
- Don't philosophize, moralize, preach or impose your own religious perspectives

Key psychosocial phrases conveying interest and empathy

I understand your concerns and most people do think a lot about the situation ...

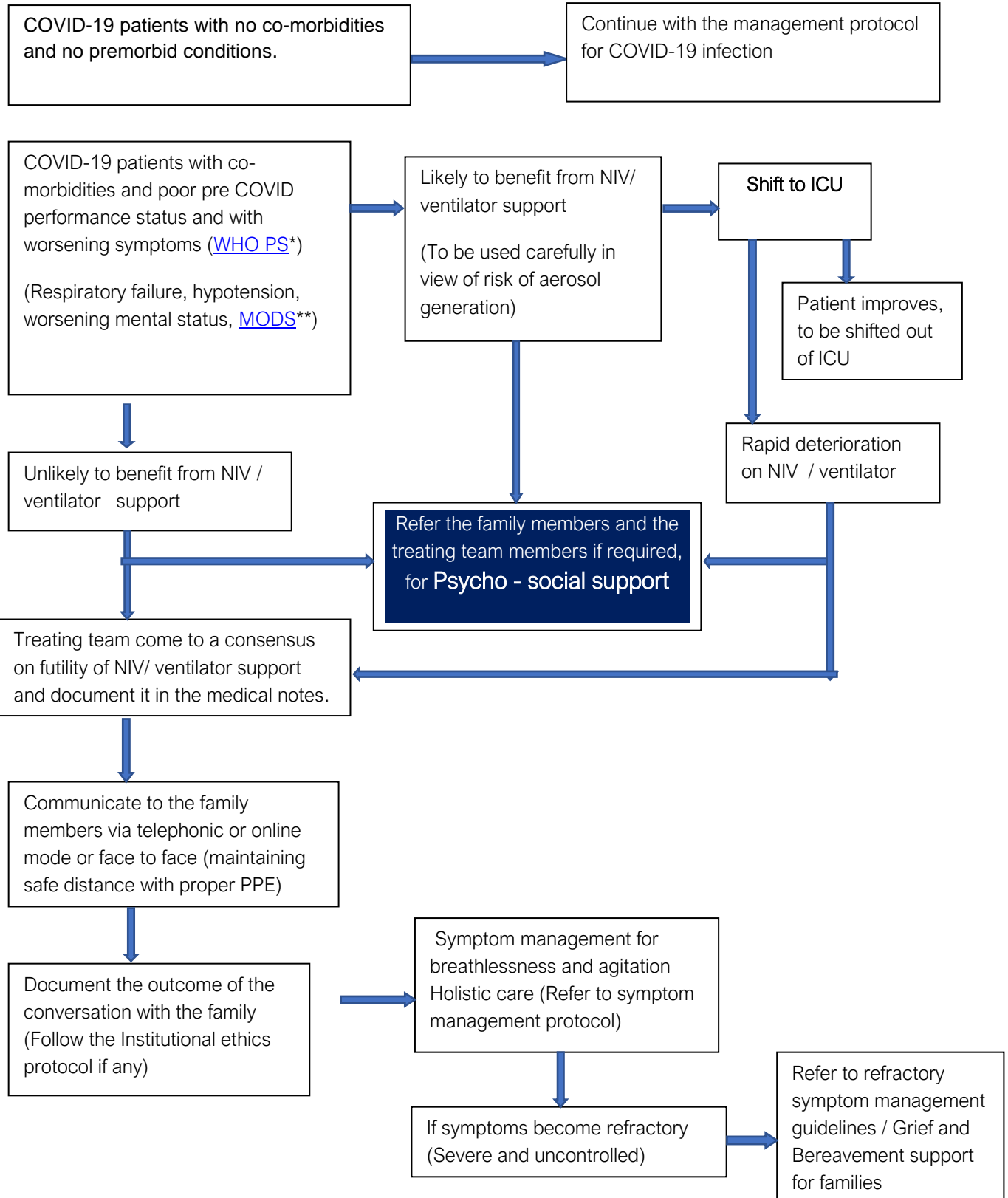
It is very natural to be sad, angry, upset or ....

What has helped you in the past... What are the sources of hope and strength for you..

What we can offer is ...

# Management of Ethical Issues - Algorithm 5

Dr. Shoba Nair



## **Guidelines for Management of Ethical Issues**

### **General principles**

Medical ethics is the basis on which clinical decision making is implemented by a treating team

The four cardinal principles of ethics are Autonomy, Beneficence, Non- Maleficence and Justice

Ethical dilemmas are often complicated. In COVID-19 patients, ethical decision making can be difficult and stressful for health care workers and family members, as it is likely that the patients may deteriorate rapidly and time to communicate and implement the outcome of ethical discussion might be insufficient

It is likely that health care professionals may need psychological support if the patient number rises and they rapidly deteriorate

### **Guidelines**

Communication and documentation are inevitable aspects of ethical decisions

Futility in treatment needs to be established quickly if the patient deteriorates. A system of triaging can be incorporated where the triaging team will make a decision about futility. They can then communicate and document the outcome of the discussion with the family members. Accordingly, patients can be either shifted to the ward or ICU for further management.

When patients are triaged and moved to the ward, they can have distressing refractory symptoms. Kindly refer to refractory symptom management guidelines.

End of life care is important in these patients as well as bereavement support for their families. Refer to the respective guidelines.

### **Glossary**

#### **\* WHO PS Scale – WHO Performance Scale**

##### **WHO performance status classification**

The WHO performance status classification categorizes patients as:

- 0: able to carry out all normal activity without restriction.
- 1: restricted in strenuous activity but ambulatory and able to carry out light work.
- 2: ambulatory and capable of all self-care but unable to carry out any work activities; up and about more than 50% of waking hours.
- 3: symptomatic and in a chair or in bed for greater than 50% of the day but not bedridden.
- 4: completely disabled; cannot carry out any self-care; totally confined to bed or chair.

#### **\*\* MODS – Multi-Organ Dysfunction Syndrome**

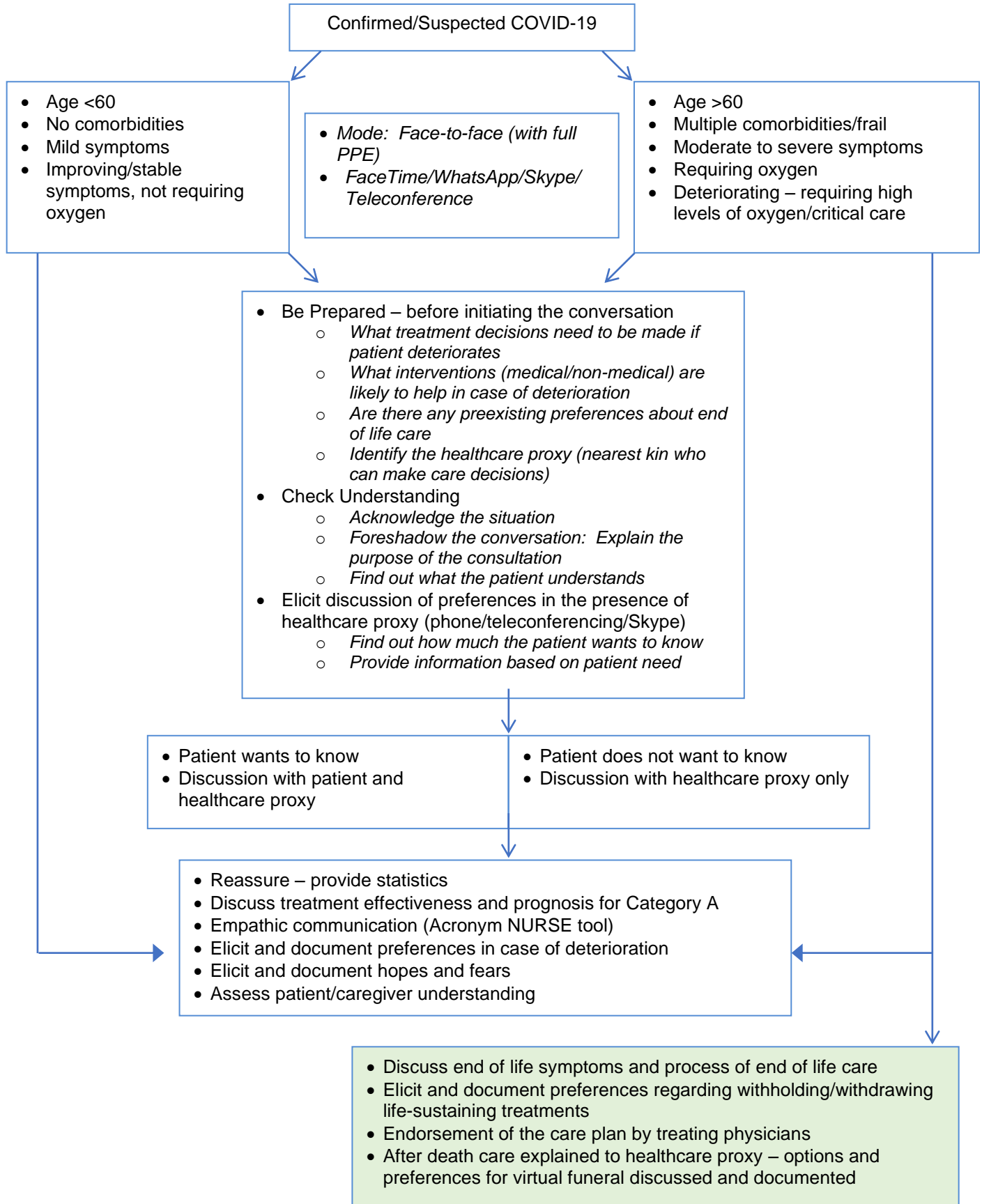
## References :

- Beauchamp TL, Childress JF. Principles of Biomedical Ethics, 6th ed, Oxford University Press, 2009
- Chiu T, Hu W, Cheng S, et al. Ethical dilemmas in palliative care: a study in Taiwan Journal of Medical Ethics 2000;26:353-357.
- Fromme E K et al. Ethical Issues in Palliative Care. Uptodate. Jan 2020
- N.I. Cherny. Esmo clinical practice guidelines for the management of refractory symptoms at the end of life and the use of palliative sedation . Ann oncol (2014) 25 (suppl 3)
- Ezekiel. J. Emanuel et.al, Fair allocation of scarce medical resources in the time of Covid-19 in NEJM March 29, 2020



# Goals of Care Discussion Framework - Algorithm 6

Dr. Seema Rao



- Conversations about goals of care, patient preferences and priorities should be initiated early in patients with severe COVID-19 disease
- SPIKES a six-step protocol can be used for conveying bad news
  - Setting up the interview – read clinical records, no interruptions
  - Assessing the patient's **P**erception – what do they already know?
  - Obtaining the patient's **I**nvitation – how much do they want to know?
  - Giving **K**nowledge and **I**nformation to the patient – explain the situation, go slow, avoid jargon, cliché
  - Addressing the patient's **E**motions with **E**mpathic Responses – show that you care
  - **S**trategy and **S**ummary – explain the next steps
- Ensure holistic and dignity conserving end of life care which is responsive to patient and caregivers spiritual/emotional needs
- Remember in this situation (COVID-19 pandemic) these conversations can be challenging given the rapid deterioration, absence of rapport, isolation and illness among multiple family members, absence of face-to-face communication
- Be prepared for anger/questioning/blaming – acknowledge and validate the emotions, be empathetic
- Empathetic approach includes NURSE protocol:
  - Name or mirror the emotions – *“You seem very angry”*
  - Understand the emotion – *“I can imagine how stressful this is...”*
  - Respect the patient/caregiver – *“I respect your feelings, but...”*
  - Support the patient using words – *“Is there someone you can talk to about this...”*
  - Explore the emotion further – *“Tell me more about your concerns...”*
- Healthcare proxy is the next-of-kin in the following order: spouse/adult children/parents/sibling/lawful guardian
- Conversations to convey death of a loved one occur over the phone. Some standard phrases would include:
  - *“I am afraid I have some serious news. Your \_\_\_\_\_ may die shortly”*
  - *“I am afraid I have some very bad news. Your \_\_\_\_\_ passed on today”*
  - *“I am so sorry this has happened...I can imagine how difficult this is for you”*
  - *Explain the circumstances of the death – Your \_\_\_ was comfortable. She passed on at (time).”*
  - *Explain the process with regard to burial, cremation, funeral arrangements – the precautions that need to be followed*
  - *Offer to arrange for the family to attend the funeral virtually through social media*

## References:

- <https://www.vitaltalk.org/guides/covid-19-communication-skills>
- COVID-19 and Palliative, End of Life and Bereavement Care in Secondary Care Role of the specialty and guidance to aid care" (March 22, 2020)
- Borasio GD, Gamondi C, Obrist M, Jox R, For the COVID-Task Force of Palliative Ch. COVID-19: Decision Making and Palliative Care. Swiss Med Wkly. 2020.

# End-of-life care and Nursing issues in managing COVID-19 patients

*Dr. Rajashree K.C, Dr. Shoba Nair*

## General Principles

1. End of Life Care (EOLC) is care given to patients when curative treatment/ interventions have been withdrawn.
2. During the last stage of life COVID-19 patients are likely to have distressing symptoms like breathlessness, agitation, and respiratory secretions.
3. The aim of EOLC is to reduce suffering by managing distressing symptoms. The hallmark of EOLC is a holistic approach addressing the physical, psychosocial and spiritual symptoms of both patients and their families with compassion.
4. Communication with the family members, regarding EOLC is required
5. People belonging to different faiths will have religious requirements and these need to be addressed as much as possible.
6. After death procedures and logistics relevant for each health care centre needs to be followed

## Guidelines for symptom management in EOLC

1. For the management of refractory (severe and uncontrollable) breathlessness, refer to guidelines provided on management of breathlessness
2. For the management of refractory agitation, refer to guidelines provided on management of agitation
3. For the management of secretions, refer to guidelines provided on management of secretions
4. Refer to guidelines provided for psychosocial support where required
5. Refer to guidelines provided for grief management and bereavement support
6. For home-based EOLC refer to guidelines provided

## Guidelines for nursing inputs in EOLC

Nursing interventions become an integral part of care in those groups of patients who get admitted to hospitals for inpatient care for severe symptoms and/or those that require care in the community due to resource scarcity. Nurses have the responsibility to provide a high quality of care to the patients while taking care of themselves.

## General principles in nursing care

- Planning and implementing the nursing procedures
- Assessing the response to the management strategies
- Recognizing the distressing symptoms, both physical and psychological, in patients
- Acknowledging the concerns among the family members
- Maintaining empathic communication and offering psychological support to the patients and family members
- Organizing the team to provide basic nursing care and other facilities (food, sanitation) to the patients.

Nursing professionals can provide meticulous care in the following domains

- Oral care
- Eye Care
- Nasogastric tube care
- Catheter care
- Care of pressure points

### Standard Instructions

#### Do's

- All nursing professionals **must** wear personal protection equipment (PPE) while doing **all** procedures.
- Collection of samples and disposal of waste should be done according to COVID-19 protocol

#### Don'ts

- Nebulizers and fans should not be used in the wards or patient rooms as it increases aerosol spread
- Suction should not be done as a routine procedure

### Nursing Interventions

## ORAL CARE

Inspection of mouth  
and oral cavity

```
graph TD; A[Inspection of mouth and oral cavity] --> B[Healthy Plan A]; A --> C[Unhealthy pale/rough/dry / Presence of oral ulcers / Candidiasis Plan B];
```

#### Healthy (Plan A)

- Clean with isotonic saline
- Gentle brushing
- Application of Lubricants/Moisturizers using long swabs (Liquid paraffin/Petroleum jelly)

#### Unhealthy (pale/rough/dry) / Presence of oral ulcers / Candidiasis (Plan B)

- Continue plan A
- Application of choline salicylate/Lignocaine 2% gel
- Application of Clotrimazole topically using long swabs
- Systemic antifungal therapy  
Fluconazole 150 mg od PO/

200 mg iv od x 7 days or as advised by the physician

**Caution: QTC prolongation**

## ORAL CANDIDIASIS



Management of excessive secretions: refer to [Algorithm 2](#) for secretions

Oral care can be highly compromised in view of compromised immune status, medications like steroids and respiratory supportive measures like endotracheal tube and oxygen therapy.

### Eyecare

Eyes are sensitive organs in any illness that require ICU admission and life supportive measures. They are more vulnerable in semi responsive /unresponsive patients who are sluggish with the protective blinking response. In COVID-19, eyes come in the 'T zone' through which droplet infection can reach body

#### Guidelines for eye care

- Eyes can be cleaned with swabs soaked in isotonic saline from inner canthus to outer canthus
- In patients who are sedated/ unresponsive/on ventilator, eyes may be covered with protective pads and antibiotic ointment, if required

#### Nasogastric tube care

Patients who are mechanically ventilated and in semi-responsive/unresponsive states have to be fed by a nasogastric tube to maintain hydration and nutrition

The important nursing considerations in a patient with a nasogastric tube (NGT) in place are as following

- Check the position of the NGT before each feed by aspiration of gastric contents
- Restrict the feed to 200ml at a time
- Cleanse the tube before and after each feed with 20 ml of clear water
- An interval of 2 hours should be maintained between each feed
- Keep the head end of the patient who is **not** intubated and fed through a nasogastric tube, **elevated for 24 hours** (low Fowler's position i.e. 30 -45 degree)
- Clean the nostrils with saline moistened swabs
- Look for erosions on nasal cartilage from pressure

### Catheter care

The patients with severe symptoms and those on mechanical ventilators will be on continuous bladder drainage to maintain an intake output chart. A catheter in place is a source of infection too. Maintaining catheter care is part of maintaining good health care.

### The important points for proper catheter care

- Maintain good perineal hygiene from the umbilicus to mid-thigh with soap and water daily, if possible twice a day
- Ensure adequate fluid intake, according to the physical status of the patient and the advice by the physician (ideally 2l/day)
- Empty the collection bag 2 hourly
- Place the collection bag below the waistline
- Avoid pulling or dragging the tube which may lead to trauma to the urinary tract
- Ensure regular bowel movement. The patient is likely to get constipated from the drugs and inactivity. Constipation predisposes to urinary tract infection
- Check the appearance of urine and plan appropriate measures as needed

### Care of pressure points

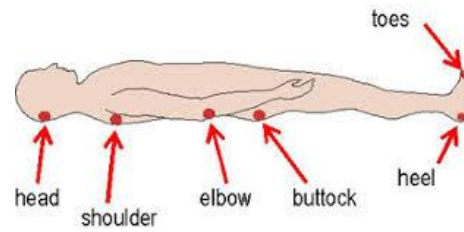
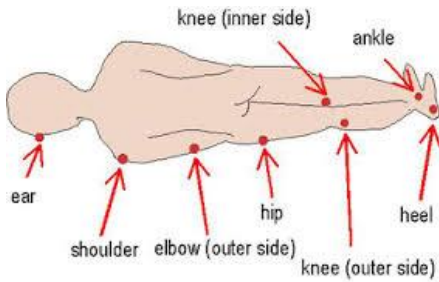
When the patients become mechanically ventilated/very sick, it will be very difficult for them to turn on a bed by themselves which will predispose them to injury to pressure points. Prevention of pressure injury is of paramount importance in the nursing care of sick patients

The following points should be meticulously carried out while caring a bedbound patient

- Check for pressure points twice a day
- Avoid soiling of skin
- Prevent dryness of skin using emollients/ moisturizers
- Pressure reducing mattress is not the mainstay to prevent pressure injury
- **Change position 2 hourly.** If the patient is actively dying, turning schedule should be made less rigid
- Avoid dragging the patient for procedures /position change
- If pressure ulcer develops, clean with isotonic saline and apply topical antibiotics, if necessary.

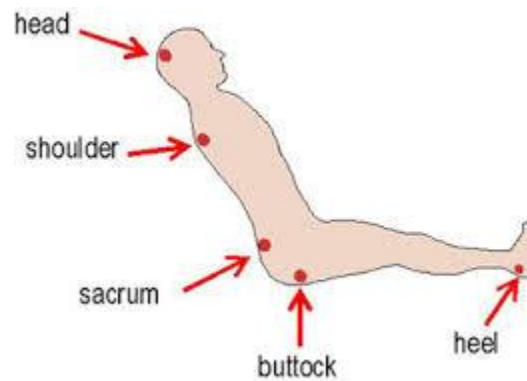
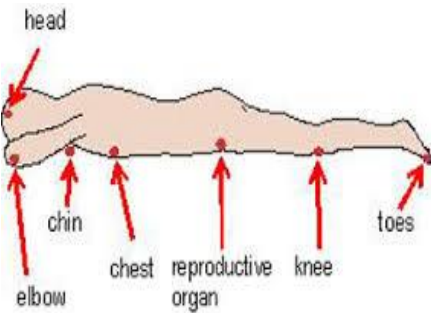
**Footnote:** In stage I pressure injury, there will not be any loss of skin, but only non-blanchable erythema will be seen. The pressure injury caused by medical devices like an oxygen mask, endotracheal tube and nasogastric tube also should be looked for

**Pressure points**



LATERAL POSITION

SUPINE POSITION



PRONE POSITION.

FOWLER'S POSITION

## Subcutaneous administration of drugs

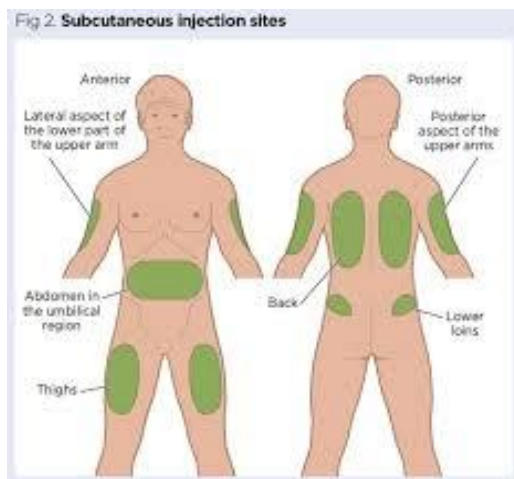
The administration of drugs through the subcutaneous route is common and practically useful in many palliative care scenarios. This mode of drug administration has a place in treating COVID patients in whom accessing an intravenous route is difficult.

The drugs **without an oil base** can safely be administered through subcutaneous route e.g. Morphine, Haloperidol, Lorazepam, Midazolam, Dexamethasone, Metoclopramide, Ondansetron, etc

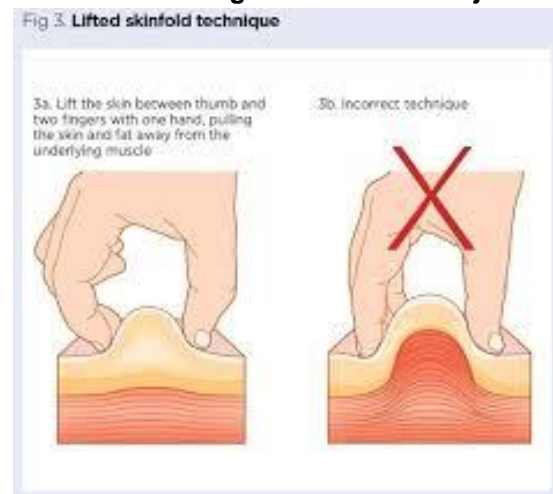
### Guidelines

- Needle size : 23 to 25 G, 3/8 inch (90 - degree angle) - 5/8 inch (45 -degree angle) long
- Volume of single injection: 1- 2 ml
- Speed of injection: Slow
- Sites: the upper outer area of the **arm**.
  - the front and outer sides of the **thighs**.
  - the **abdomen**, except for a 2-inch area around the navel.
  - the **upper hip**
  - the upper outer area of the **buttocks**.
- Angle: 45 degrees, where 1 inch of tissue can be grasped  
90 degree, where 2 inches of tissue can be grasped (buttocks)

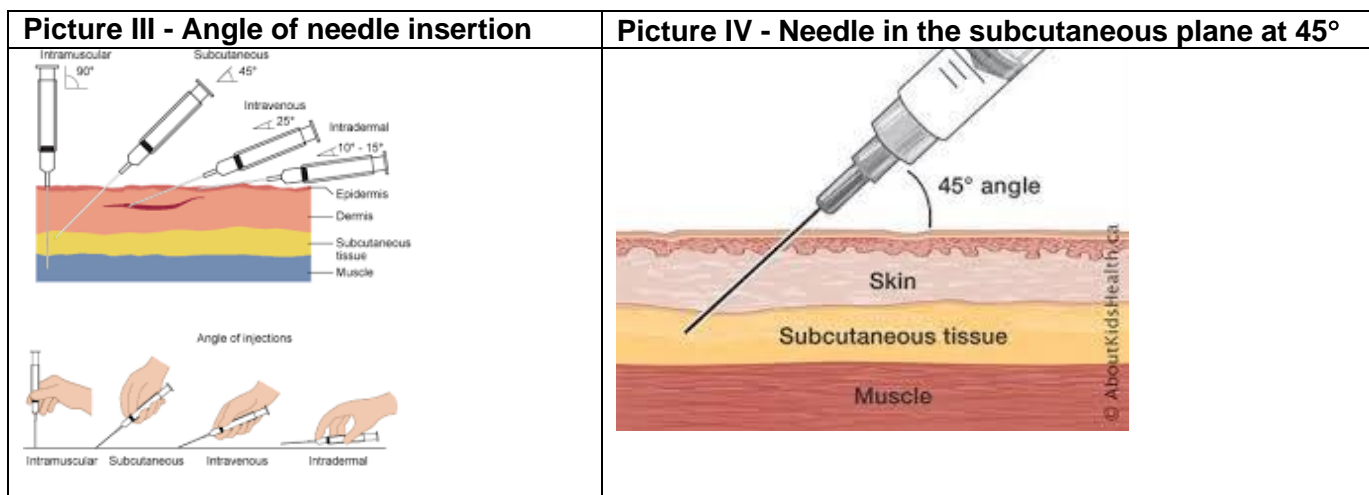
Picture I - Sites for subcutaneous injection.



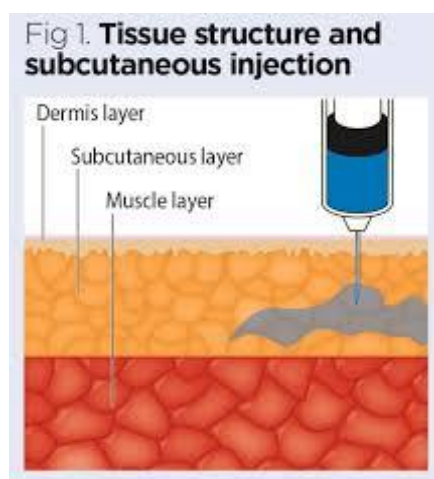
Picture II - Holding the tissue for injection







**Picture V – Needle in the subcutaneous plane at 90 degree angle**



## Conclusion

Nurses provide compassionate care to COVID-19 patients but the nature of work puts them at risk. They might feel vulnerable because of the nature of the pandemic and limited supply of PPE

## References:

- End of life nursing consideration - COVID-19 patients, Hospital Palliative Care New Zealand (HPCNZ)
- Nurses, Ethics and the Response to COVID-19 Pandemic - American Nurse Association
- Textbook of Certificate Course in Essentials of Palliative Care; 5th edition (2017)
- Revised National Pressure Ulcer Advisory Panel Pressure Injury Staging System, Laura E. Edsberg et al in J Wound Ostomy Continence Nursing 2016;43(6)585-597
- Kozier and Erb's Fundamentals of Nursing - Concepts, Process and Practice; 9th edition (2013) edited by A. Berman and S. Snyder

# Burn-out and Interventions

Dr. Seema Rao, Dr. Poornima Sunder, Dr. Odette Spruijt, Dr. Chitra Venkateswaran

- The COVID-19 pandemic bringing in social distancing, the fear of spread, illness, death is contributing to people becoming stressed, anxious and frustrated. Specific groups such as health care workers working in frontline care, and those working for vulnerable populations in diverse settings, are exposed not only to the risk of becoming ill with COVID-19 themselves but also to the risk of increasing anxiety.
- The disturbed work schedules, extended shifts, disrupted sleep patterns, blurring of roles, exposure to morbidity and mortality, the need for increased intensity of team communication and discussions leading to frequent changes in practice and decision-making, information overload including fake news on social media, all contribute to harmful exhaustion. At such times, the risk of burn-out increases.
- “Burn-out is a syndrome conceptualized as resulting from chronic workplace stress that has not been managed successfully. It is characterized by three dimensions:
  - Feelings of energy depletion or exhaustion;
  - Increased mental distance from one’s job, or feelings of negativism or cynicism related to one’s job; and
  - reduced professional efficacy.

*Burn-out = Emotional Exhaustion+ Disillusionment+ Withdrawal*

- Burn-out refers specifically to phenomena in the occupational context and should not be applied to describe experiences in other areas of life <sup>1,2</sup>”
- Burn-out often goes unrecognized in routine clinical practice but must be attended to in humanitarian crises such as the COVID-19 pandemic.
- Emotions including guilt, blame, not being able to contribute to frontline work while being in quarantine, fear of ignoring or bring an infection back home, feeling responsible for negative outcomes could be predominant expressions of distress.
- Burn-out is not just equivalent to an increased load of work but is a psychological condition that has a huge impact on carers and patients alike. This state leads to errors, poor quality of care and poor satisfaction for patients and families.
- “Moral distress/injury” resulting from the inability to deliver care despite taking an oath to provide medical care, maybe compounded by the lack of available essential resources such as beds, face masks PPE, ventilators. These factors, alongside fatigue, inner conflict, uncertainty and the ever-present risk of violence directed at health carers, all contribute to a heightened risk of burn-out.
- Amid the coronavirus disease 2019 (COVID-19) pandemic, the American Academy of Sleep Medicine has issued a position statement noting the significance of sufficient sleep among physicians. An insufficient amount of sleep has been linked to physician burn-out<sup>3</sup>.
- All types of health workers, their families and patients’ families can experience high levels of burn-out.

**Interventions:**

Principles

- Teamwork, establishing and maintain belonging at work
- Enabling and building emotional and social connectedness
- Focusing on a blend of work and life

Organizational	<ul style="list-style-type: none"> <li>• Restructuring of workplace – clear delineation of roles and responsibilities/workload redistribution</li> <li>• Empowering healthcare staff and improving their sense of self-efficacy –</li> </ul> <p>-Retraining and enhancing medical/technical skills as many may have to shift roles and work in the ICU during pandemics</p> <p>-Education and training healthcare workers on safety, PPE, and disinfection</p> <ul style="list-style-type: none"> <li>• Provide adequate equipment to safeguard the health of frontline staff</li> <li>• Limited work hours, regular breaks and predictable schedules</li> <li>• Structured process in place for the care of the frontline healthcare staff if they become infected with COVID-19 related illnesses</li> </ul>
Team/Family discussion	<ul style="list-style-type: none"> <li>• Goals of the day - clear and consistent</li> <li>• The team should discuss the guiding philosophy regularly, why are we doing this, what is our role in society. Maintain motivation and direction</li> </ul>
	<ul style="list-style-type: none"> <li>• Share responsibility with team, family and community- To avoid feeling responsible for curing, saving, allow sharing of helplessness, hopelessness and sense of failure in medical goals             <ul style="list-style-type: none"> <li>○ Consider limiting clients per staff</li> <li>○ Spread work among staff/family members, have staff have more than one role- some members can have more unrewarding roles-                 <ul style="list-style-type: none"> <li>▪ So can you also do this for the team?</li> </ul> </li> <li>○ Time –outs –Use volunteers, auxiliary staff</li> <li>○ Buddy systems – more experienced worker paired with a less experienced one</li> </ul> </li> <li>• Interaction between team members talking about other important matters, asking about family. There will be a tendency not to address personal matters amidst the rush and medical emergencies             <ul style="list-style-type: none"> <li>▪ How is your mother at home? Is she safe?</li> <li>▪ Are your children being taken care of?</li> <li>▪ How are you coping with travel?</li> </ul> </li> </ul>

	<ul style="list-style-type: none"> <li>▪ How is your sleep?</li> <li>• Introduce feedback on short-term goals. For eg: appreciation on managing the team, symptoms, nursing care (finding parenteral access in difficult situations, etc.) <ul style="list-style-type: none"> <li>○ I really like what you did for that person</li> <li>○ I value your time and contribution</li> <li>○ Great to see you this morning</li> </ul> </li> <li>• Have short meetings with the team in between the crises to discuss and supervise- provide time for learning (nurses and other professionals may be scared to ask or question)</li> <li>• Incorporate regular debriefing</li> <li>• Online counseling by mental health professionals for ventilation, validation and discuss how to cope</li> <li>• Provide information on new terms, techniques, and welcoming the new staff with warmth</li> </ul>
Individual	<ul style="list-style-type: none"> <li>• Ensure help in dealing with the physical strain of PPE (dehydration, heat, exhaustion)</li> <li>• Encourage time-outs for basic bodily care and refreshments</li> <li>• Explore concerns and expectations and encourage to adopt more realistic and gratifying goals</li> <li>• Self-monitoring and pacing activities</li> <li>• Relaxation, mindfulness techniques</li> <li>• Foster a sense of hope</li> <li>• Ensure adequate support</li> </ul> <p>--Ongoing communication with family via phone/laptop</p> <p>-- Virtual meetings with friends over zoom/WhatsApp</p>
Periodic check-up and follow up-refer to a mental health professional if the state doesn't resolve	

**References:**

- [https://www.who.int/mental\\_health/evidence/burn-out/en/](https://www.who.int/mental_health/evidence/burn-out/en/) Accessed on 29/03/2020
- [https://apps.who.int/iris/bitstream/handle/10665/60992/WHO\\_MNH\\_MND\\_94.21.pdf;jsessionid=E69AC0B2E53616DBE9957821FB42B8CF?se](https://apps.who.int/iris/bitstream/handle/10665/60992/WHO_MNH_MND_94.21.pdf;jsessionid=E69AC0B2E53616DBE9957821FB42B8CF?se) Accessed on 29/03/2020
- Kancherla BS, Upender R, Collen JF, et al. Sleep, fatigue and burnout among physicians: an American Academy of Sleep Medicine position statement [published online February 28, 2020]. *J Clin Sleep Med*. doi: 10.5664/jcsm.8408.

# Grief and Bereavement in COVID-19 - Algorithm 7

*Dr. Seema Rao, Dr. Poornima Sunder, Dr. Odette Spruijt, Dr. Mhoira Leng, Dr. Chitra Venkateswaran*

The COVID-19 pandemic brings about a collective, community-oriented loss experienced not only at the family level, but also at a social, economic and political level. Grief and the rituals of mourning are healthy adaptations to loss. But the social distancing, isolation, and quarantine for contacts make the grieving process challenging. The family, which may be isolated, will find it difficult going through preparatory (anticipatory) grief not knowing how the loss is going to be. Though the majority of infected people are expected to recover, the uncertainty, fear and anxiety of loss will be enormous.

The person with the illness will also be isolated, with only the medical team around him, again maintaining a distance and wearing PPE. The usual methods of communication, of establishing trust, rapport, non-verbal gestures especially touch, and presence of family will not be possible. Family's wishes will be discussed at a distance, over the phone, or using technology.

Bereavement is more complicated due to the changes in the traditional societal mourning process. Funerals, burials, and gatherings are not allowed, with these being carried out according to the government policy. This is completely new to all of us and brings in the potential for prolonged grieving. The nature of loss and the measures to limit spread compound the trauma.

The complete impact on those who are bereaved for the measures taken by the systems, health and government as a result of COVID-19 is not yet known.

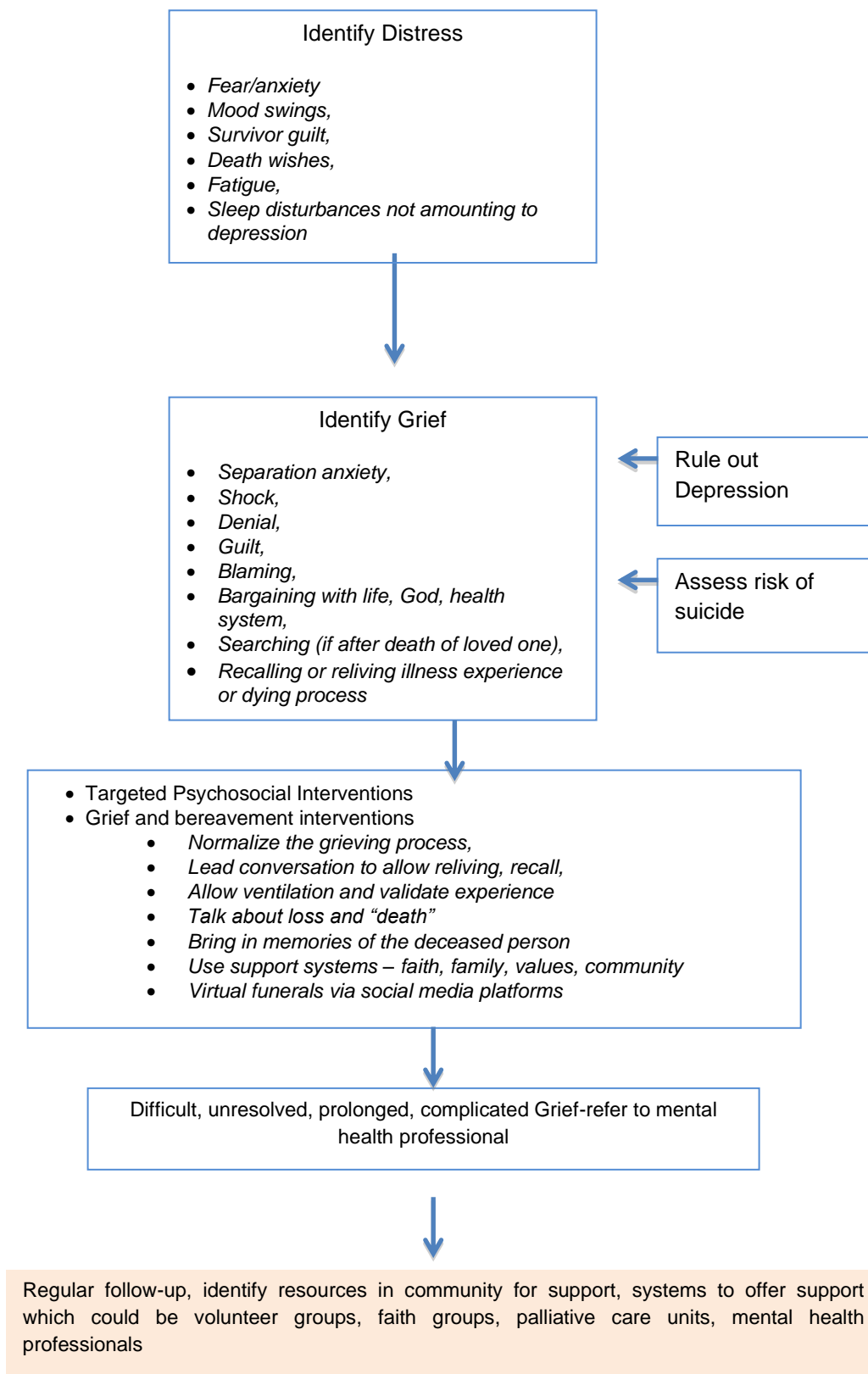
The possible measures are to stay connected with technology and other methods essential to continue providing support and a presence for the grieving family.

## **Stay connected**

This present era is familiar to using emails, texts and phones for all communication. Its application is more acceptable and necessary as the restrictions on gathering size and social distancing are in effect.

Facebook/Whatsapp and other video conferencing could be used routinely.

In addition to the use of technology, the telephone and mobile phone remains a powerful and effective way to stay connected and support the bereaved family.



**Glossary:**

Grief is the individual's response to the event of the loss. Grief is generally experienced in three ways: psychologically through feelings, thoughts, attitudes; socially through behavior with others; and physically through health and bodily functions.

Bereavement can be defined as the objective event of loss associated with death, changes in relationships or economic status, as well as geographic relocation.

Distinguishing grief from depression is necessary and to understand that grief is a part of the normal dying process.

Preparatory (anticipatory) grief is experienced by virtually all patients who are dying and their family members and can be facilitated with psychosocial support and counseling. Ongoing pharmacotherapy is generally not beneficial and may even be harmful to patients who are grieving.

**References:**

- Am Fam Physician 2002;65:883-90,897-8. Copyright© 2002 American Academy of Family Physicians.
- <https://www.shiva.com/learning-center/coping/a-new-grief-staying-connected-to-help-covid-19-coronavirus/>

# Psychosocial interventions for COVID-19- Supporting document

*Dr. Poornima Sunder, Anupama Prabhu, Uma Parameswaran*

As a public health emergency of international concern, COVID-19 with its uncertainties about spread, novelty of the virus itself and unparalleled containment efforts has compounded the dilemma the society faces at multiple levels. While the biological and physical repercussions of the disease get disproportionately more attention, the mental health aspects also demand dynamic attention. Epidemics have also imparted a vital realization that the absence of effective mental health and psychosocial support system increases risks of psychological distress and progression to psychopathology. <sup>1</sup>

A survey conducted in China during the initial outbreak of COVID-19 found that 53.8% of respondents rated the psychological impact of the outbreak as moderate or severe; 16.5% reported moderate to severe depressive symptoms; 28.8% reported moderate to severe anxiety symptoms, and 8.1% reported moderate to severe stress levels <sup>1</sup>. The psychological impact of the outbreak was higher among women and students, with higher reports of stress, anxiety and depression. In order to reduce the risk of negative psychological outcomes of the COVID-19 outbreak and to promote social stability, the National Health Commission of China (NHC) has integrated psychological crisis intervention into the general deployment of disease prevention. Similar measures have been necessitated in other countries fighting the pandemic as well <sup>2,3</sup>.

The stigma of the illness with its resultant labeling, stereotyping and discriminating, lack of knowledge about the disease, uncertainties of the outbreak, constant media reactions and false information compounds the problem. In a country like India, there are added worries of social and economic disruption that can further complicate mental health problems<sup>3</sup>.

Fear of and worries about infecting family and friends, especially the elderly. The thought that one may be asymptomatic but still have the potential to infect others is quite disturbing. These worries are magnified among healthcare workers in isolation and quarantine. The pandemic has kicked off a grieving process in the community, in anticipation of the perceived collective loss and death, increasing the vulnerability to grief and burn out <sup>.4</sup>

The mental health impact of pandemics extends beyond the period of the pandemic; hence, it is vital that we understand individual and collective behavior, emotions, and reactions to the crises and their coping behaviors. It will enable us to mitigate the effects of the ongoing crisis and also be better equipped for future <sup>1</sup>.

Palliative care teams, with their bio-psycho-socio-spiritual approach, have much to contribute in these times and can in addition to physical symptom management, help in providing care that is in line with patient and family values, and improve connectedness. They can also help by training healthcare workers in bereavement



counseling, enhancing their communication skills especially in the context of PPE, and implement measures to mitigate the effects stress in this population. '

Palliative care also focuses on supporting the person with the illness throughout their journey. From the period of isolation, or quarantine, to end-of-life and beyond, addressing grief and bereavement of the families coping with the loss of their loved ones. The risk of having posttraumatic stress symptoms for extended periods is significant in this scenario, in which the palliative care teams, with their home-based approach are capable of addressing in the community.

### **Rapport building and reflective or active listening:**

Effective healing after trauma begins from within, remember we are here to help people gain understanding about their current situation and make informed decisions by themselves.

Start with introducing yourself and enquiring about the caller or person seeking help. Focus on who they are, where they are calling from and their current situation, which would include quarantine/ isolation status. Idea is to encourage them to talk and verbalize their concern ...is it about a family member, themselves?

Remember to speak slowly, clearly and calmly. Convey that you understand their situation, acknowledge their distress, use phrases to normalize their current feelings and allow for ventilation. Where ever possible, conveying a sense of all being in it together and as a society, we are helping each other to be safe by complying with lockdown/ quarantine.

Preferably use open-ended questions. For example, more of "how are you doing?" rather than "are you doing fine?" questions. A well-framed question conveys a sense of understanding.

Be empathetic and address issues by literally employing the approach of " walking in another person's shoes". Our best guide can be the cascade wherein empathy leads to trust, which in turn leads to compliance.

Summarizing is a useful skill that involves taking somebody else's words and turning them into your own. It gives the person the confidence that his concerns have been heard, understood, and validated. It also ensures that you got the right perspective after listening to the conversation. The situation can be pretty tricky as we can end up in a lot of assumptions, especially when the part of non-verbal communication is almost nil. Paraphrasing and rephrasing, when done with empathy, enables the person seeking help to gain a better perspective about their current situation.

#### **Key psychosocial phrases conveying interest and empathy :**

- I understand your concerns and most people, are facing similar doubts...
- It is very natural to be sad, angry, upset
- I hear what you are saying, about having to...
- I fully understand that you are feeling this way...
- In this situation, your reaction is quite natural...
- What has helped you in the past?... Are you religious?... Because some people are depending on their faith to give strength
- Maybe we can discuss possible solutions...
- What we can offer is...
- I am concerned about you, and I would like to suggest to refer you to someone who can help you ...

## Symptoms:

Common mental/emotional reactions:

- Feeling stressed or overwhelmed
- Feeling anxious or worried, thoughts about own health and that of loved ones
- Sadness, low mood
- Frustration
- Irritability
- Difficulty concentrating
- Loss of interest in activities
- Trouble relaxing
- Worsening of ongoing mental health problems

Common physical symptoms:

- Increased heart rate
- Restlessness or agitation
- Stomach upset,
- multiple aches and pains (not associated with fever)

Common Behavioral Reactions:

- Fatigue, or other vague/ uncomfortable sensation
- Changes in eating patterns
- Difficulty sleeping
- Worsening of chronic health problems
- Increased use of alcohol, tobacco, or other substances

Common symptoms can be divided in to:

- Panic -anxiety type- palpitations, tremors, restlessness, irritability, fear
- Depressive type-low mood, lack of interest, irritability, sleep disturbance,
- Social - loneliness, boredom, worries, frustration

## Red flag signs

These are the warning signs that when present should warrant immediate referral. If elicited during a conversation, immediately report to concerned authorities.

Agitation: This can result in a risk of harm to self or others. The history is usually elicited from caregivers. It is usually indicative of other serious underlying conditions.

Confusion or Disorientation: can be due to delirium. History elicitation will include, worsening towards evening, disorientation to time, place or person, agitation, hallucinations, fearfulness, etc. Also, clarify for alcohol use. It is an emergency, requiring immediate referral for further management

Substance use: There can be an increase in substance use that can worsen existing mental health problems. With lockdown being in place, withdrawals will also be common. In the case of substance use history being elicited it is always better to refer for further evaluation.

Hallucination and delusions: They can be part of an acute transient psychosis or worsening of pre-existing psychiatric conditions. It can also be indicative of delirium or alcohol withdrawal. Hence when elicited, it's always better to refer for detailed evaluation and further management.

Suicidal ideation: if a person seeking help indicates wanting to end life either directly or indirectly, immediate referral for risk assessment and further management is warranted. If the person sounds distressed and extremely anxious, clarify for any suicidal ideations as people might not spontaneously come up with the same due to stigma. Before referring to a specialist, ensure that the family or caregivers are aware of the suicidal risk and the precautions to be followed. Also, you can give them details about various suicide helpline numbers. (refer [Helplines](#))

### **Perceived distress**

The concept is adapted from distress as a vital component that needs to be addressed in cancer patients. It is defined as “a multifactorial unpleasant emotional experience of a psychological (cognitive, behavioral, emotional), social, and/or spiritual nature that may interfere with the ability to cope effectively with cancer, its physical symptoms, and its treatment” the concept was thought to be more appropriate in the current context as it also provides us simple way to measure distress.

After symptoms are elicited, use a distress thermometer to quantify perceived distress. Ask the patient to rate the distress they have been feeling over the past one week on a scale of 0-10, if required give prompts like to rate in terms of percentage or commonly used currency etc.,

A score of above 4 with significant distress due to presenting symptoms would warrant further psychosocial evaluation. ([ANNEXURE 1](#) for distress thermometer)

### **Psychosocial interventions**

COVID-19 with the requirements of quarantine and lockdown has invariably resulted in interesting challenges of delivering mental health services. However, we can be mindful of a few techniques that will help people tide over this crisis.

### **Psychoeducation:**

General strategies when communicating:

- a. Explain the source of the information and how reliable it is, use statistics where possible
- b. Say only what you know – do not makeup information or give false reassurances;
- c. Disclaimer that this is latest, we are still learning about the virus and that research is going on in parallel
- d. Keep messages simple and accurate, and repeat the information to be sure people hear and understand it
- e. It may be useful to give information to groups of affected people so that everyone hears the same message
- f. Let people know if you will keep them updated on new developments, including where and when.

- g. When giving information, be aware that the helper can become a target of the frustration and anger people may feel, especially when their expectations of help have not been met by you or others. In these situations, try to remain calm and be understanding.
- h. Try to keep yourself informed of the latest updates on the outbreak.
- i. Try using official written information, such as posters and leaflets in the local language, or pictorial form for people with low literacy, to complement the information you are giving

**Relevant sources of information:** Try to stay updated about the news by relying only on authentic news.

Limit the news time by listing the program to watch, such as limiting it to only some of the reliable resources: WHO website/ WhatsApp chatbot, Government press meets and apps, information by Governing bodies like the Ministry of Health and family welfare.

### **Addressing stress and strengthening social support**

#### **Reassurance:**

Reassurance must be honest. The person seeking help must believe that the reassurance is based on an understanding of his or her unique situation. Reassurance that is given before the person has detailed his or her concerns is likely to be doubted. Limit reassurance to areas in which you have dependable common information. It is never acceptable to offer reassurance that is simply what the patient (or family) wants to hear. If the patient demands reassurance and this reassurance is outside your expertise the basis for the reassurance should be made explicit.

*Example :*

*Caller: Why aren't they testing everybody?*

*Health professional: We don't have enough test kits (if the data support the statement). I wish it were different.*

#### **Normalizing grief/ anxiety:**

It is a form of reassurance. Remember, stress reactions are a normal reaction to an abnormal situation. Normalising allows us to reassure the person seeking help that their experiences, thoughts, and feelings are not unusual or pathological under the current circumstances. Reassurance and normalizing must not extend to pathological fears or relationships. You may use the technique from a position of authority as in the following example

*Example :*

*Caller: I am scared, will I get corona? I want to live.*

*Health professional: This is such a tough situation. I think anyone would be scared. We are doing everything we can. Would you like to tell me more about your concerns...*

### **Normalizing feelings of anger, and at the same time decreasing anger-driven behaviors:**

Feeling angry in the current situation of quarantine and lockdown is normal. When a person seeking help complains about the same or is noticed to be irritable or frustrated try to normalize the same for them. Explain to them that even though in this case their anger is justified, fueling anger will not help them to respond effectively. Don't give in to the urge of giving in to anger, practice doing the opposite, e.g., When you have the experience of anger, relax your body and redirect your attention away from building a case against the object of my anger.

*Example:*

*Caller: I have not been able to go for work because of lockdown and it just makes me so angry.*

*Health professional: Under current circumstances your anger is normal... I can wait till you calm down (suggest calming techniques if needed) and then we can discuss your concerns and see how we can help you out.*

**Calming techniques:** When a person seeking help feels anxious or worried tell them to do whatever relaxes them, in a healthy way, such as listening to music, dancing, yoga, taichi, deep breathing, etc. For some people, routine chores like sweeping, mopping, cooking relax them. Getting cardiovascular exercise done is also an important and often overlooked resource in calming down. A brisk walk around the house, or outside in nature, if at all possible, also calms the mind. Inform the caller, that focusing on the "here and now" rather than on uncountable events can help clear the mind.

Some specific calming techniques like deep breathing and mindful observation are explained in [ANNEXURE 2](#)

**Maintain hope:** Believe in something meaningful, whether it be family, faith, country or values. Before this pandemic all of us had some **purpose in life**, be it studying to become somebody, providing a safe future for your kids, building that dream home. Therefore, remember those purposes, and (unless you are seriously affected by the virus) realize that things have not changed much and hopefully you can still continue in your pursuit of your purpose.

**Guilt:** People can feel guilty about getting others infected in current circumstances. Address the same by reassuring them about following hygiene practices and physical distancing, as these are the proven and effective ways of containing spread of infection. As long as they are practising the same, the chances of unknowingly spreading the infection is low.

**Physical distancing by maintaining social connectedness:** Stay connected with your family and friends using social media, mail, etc. Have a virtual chat using apps, read books, watch same films again. This can be the time to catch up with lost or forgotten friendship. It can also be a good excuse to mend that broken relationship.

**Play:** is a great stress buster and play can invigorate anybody. Play for fun and not solely for competition. When quarantined, it is usually indoor play activities. However, what one can play is limited only by one's imagination. One can play using board games and indoor sports activities. You can play with children, partners, parents, or with anybody available.

**Link for supporting basic needs:** Basic needs like provisions, medicines, etc., are essential for everyone. Refer to [Helplines](#) for further information.

## Promote daily activities

**Routine your daily activities:** Plan and uphold a daily routine, create a well-being plan for the days and weeks.

**Be active by setting goals:** Set goals that are realistic in the given circumstances. Such as creating a list of books to be read or written, music to listen, food to cook, paint, knit, learn a new language, clean the house etc

**Plan time alone and time together (if living with others):** Create a list of things to do together, read books aloud to each other, listen to and discuss radio, TV and podcasts. Take turns caring for children and doing household chores.

**Sleep Hygiene** is used to describe good sleep habits. It is a variety of different practices and habits that are necessary to have good nighttime sleep quality and full daytime alertness. Advice to Exercise early in the day, have a regular sleep-wake routine, eliminate caffeine and alcohol near bedtime, if you don't fall asleep within 30 minutes, do not watch TV or the Internet if you can't sleep and not to worry about sleep-it makes it worse. For more details refer [ANNEXURE 3](#).

## Pharmacological management:

### General principles:

Here we discuss pharmacological intervention for anxiety and depressive symptoms which are predominantly seen in this group of people. Start medications only when the person seeking help has significant distress or behavioral symptoms warranting a pharmacological intervention. Medications should be considered with caution, weigh it against the risks of medication side effects as well as the probability of recovery with just supportive therapy and lifting off quarantine/ lockdown in the near future. Start at a low dose and titrate slowly as needed.

Recommended medicines include Selective Serotonin Reuptake Inhibitors (SSRI's):

Escitalopram minimum effective dose is 10 mg/ day and the maximum dose is 20 mg/day

Sertraline minimum effective dose is 50 mg/ day and the maximum dose is 200 mg/ day

When prescribing, also talk about lag effect, where the beneficial effect of medication might appear in a few weeks only. Common side effects include nausea, GI upset and headache. In some, SSRI can cause restlessness and insomnia. Start at a lower dose and titrate slowly. In the elderly, a potential complication includes hyponatremia.

Medications when needed, can be prescribed for a short duration (6-9 months) and then can be considered to be tapered off slowly.

In view of the respiratory symptoms of COVID-19, shorter-acting benzodiazepines like lorazepam at lower doses can be prescribed to lower anxiety symptoms and address insomnia. However, care should be taken to taper and stop the same once the patient is better, as benzodiazepines have addictive potential.

**Ending the conversation:**

Summarize the conversation by highlighting key issues discussed and action points.

*Example: "We talked about where you can find reliable sources of information, and how you can stay in touch with your loved ones even though living alone and having food delivered. Also, taking up your old interest could help pass time in a nice way."*

"I will say goodbye and wish you a pleasant day."

Agree if a follow-up conversation is needed, and if so, find a suitable time.

*Example: "If you would like to talk another time, please don't hesitate to call again and talk to me or one of my colleagues. Of course, I cannot be sure, I will be in to take the call, but you are most welcome to call again."*

End the call by thanking for the conversation. In the end, also take a minute to relax yourself before you move onto helping others.

**ANNEXURE 1**

**Distress thermometer:**

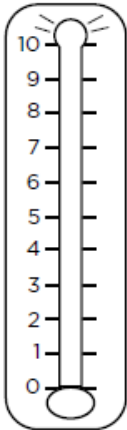
<b>DISTRESS THERMOMETER</b>	<b>PROBLEM LIST</b>																																																																																													
<p>Instructions: Please circle the number (0-10) that best describes how much distress you have been experiencing in the past week including today.</p>	<p>Please indicate if any of the following has been a problem for you in the past week including today. Be sure to check YES or NO for each.</p>																																																																																													
<p>Extreme distress</p>	<b>YES</b>	<b>NO</b>																																																																																												
	<table border="0"> <tr> <td colspan="2"><b>Practical Problems</b></td> <td colspan="2"><b>Physical Problems</b></td> </tr> <tr> <td><input type="checkbox"/></td><td>Child care</td> <td><input type="checkbox"/></td><td>Appearance</td> </tr> <tr> <td><input type="checkbox"/></td><td>Housing</td> <td><input type="checkbox"/></td><td>Bathing/dressing</td> </tr> <tr> <td><input type="checkbox"/></td><td>Insurance/financial</td> <td><input type="checkbox"/></td><td>Breathing</td> </tr> <tr> <td><input type="checkbox"/></td><td>Transportation</td> <td><input type="checkbox"/></td><td>Changes in urination</td> </tr> <tr> <td><input type="checkbox"/></td><td>Work/school</td> <td><input type="checkbox"/></td><td>Constipation</td> </tr> <tr> <td><input type="checkbox"/></td><td>Treatment decisions</td> <td><input type="checkbox"/></td><td>Diarrhea</td> </tr> <tr> <td colspan="2"><b>Family Problems</b></td> <td><input type="checkbox"/></td><td>Eating</td> </tr> <tr> <td><input type="checkbox"/></td><td>Dealing with children</td> <td><input type="checkbox"/></td><td>Fatigue</td> </tr> <tr> <td><input type="checkbox"/></td><td>Dealing with partner</td> <td><input type="checkbox"/></td><td>Feeling swollen</td> </tr> <tr> <td><input type="checkbox"/></td><td>Ability to have children</td> <td><input type="checkbox"/></td><td>Fevers</td> </tr> <tr> <td><input type="checkbox"/></td><td>Family health issues</td> <td><input type="checkbox"/></td><td>Getting around</td> </tr> <tr> <td colspan="2"><b>Emotional Problems</b></td> <td><input type="checkbox"/></td><td>Indigestion</td> </tr> <tr> <td><input type="checkbox"/></td><td>Depression</td> <td><input type="checkbox"/></td><td>Memory/concentration</td> </tr> <tr> <td><input type="checkbox"/></td><td>Fears</td> <td><input type="checkbox"/></td><td>Mouth sores</td> </tr> <tr> <td><input type="checkbox"/></td><td>Nervousness</td> <td><input type="checkbox"/></td><td>Nausea</td> </tr> <tr> <td><input type="checkbox"/></td><td>Sadness</td> <td><input type="checkbox"/></td><td>Nose dry/congested</td> </tr> <tr> <td><input type="checkbox"/></td><td>Worry</td> <td><input type="checkbox"/></td><td>Pain</td> </tr> <tr> <td><input type="checkbox"/></td><td>Loss of interest in usual activities</td> <td><input type="checkbox"/></td><td>Sexual</td> </tr> <tr> <td><input type="checkbox"/></td><td><b>Spiritual/Religious Concerns</b></td> <td><input type="checkbox"/></td><td>Skin dry/itchy</td> </tr> <tr> <td></td><td></td> <td><input type="checkbox"/></td><td>Sleep</td> </tr> <tr> <td></td><td></td> <td><input type="checkbox"/></td><td>Substance use</td> </tr> <tr> <td></td><td></td> <td><input type="checkbox"/></td><td>Tingling in hands/feet</td> </tr> </table>		<b>Practical Problems</b>		<b>Physical Problems</b>		<input type="checkbox"/>	Child care	<input type="checkbox"/>	Appearance	<input type="checkbox"/>	Housing	<input type="checkbox"/>	Bathing/dressing	<input type="checkbox"/>	Insurance/financial	<input type="checkbox"/>	Breathing	<input type="checkbox"/>	Transportation	<input type="checkbox"/>	Changes in urination	<input type="checkbox"/>	Work/school	<input type="checkbox"/>	Constipation	<input type="checkbox"/>	Treatment decisions	<input type="checkbox"/>	Diarrhea	<b>Family Problems</b>		<input type="checkbox"/>	Eating	<input type="checkbox"/>	Dealing with children	<input type="checkbox"/>	Fatigue	<input type="checkbox"/>	Dealing with partner	<input type="checkbox"/>	Feeling swollen	<input type="checkbox"/>	Ability to have children	<input type="checkbox"/>	Fevers	<input type="checkbox"/>	Family health issues	<input type="checkbox"/>	Getting around	<b>Emotional Problems</b>		<input type="checkbox"/>	Indigestion	<input type="checkbox"/>	Depression	<input type="checkbox"/>	Memory/concentration	<input type="checkbox"/>	Fears	<input type="checkbox"/>	Mouth sores	<input type="checkbox"/>	Nervousness	<input type="checkbox"/>	Nausea	<input type="checkbox"/>	Sadness	<input type="checkbox"/>	Nose dry/congested	<input type="checkbox"/>	Worry	<input type="checkbox"/>	Pain	<input type="checkbox"/>	Loss of interest in usual activities	<input type="checkbox"/>	Sexual	<input type="checkbox"/>	<b>Spiritual/Religious Concerns</b>	<input type="checkbox"/>	Skin dry/itchy			<input type="checkbox"/>	Sleep			<input type="checkbox"/>	Substance use			<input type="checkbox"/>	Tingling in hands/feet
<b>Practical Problems</b>		<b>Physical Problems</b>																																																																																												
<input type="checkbox"/>	Child care	<input type="checkbox"/>	Appearance																																																																																											
<input type="checkbox"/>	Housing	<input type="checkbox"/>	Bathing/dressing																																																																																											
<input type="checkbox"/>	Insurance/financial	<input type="checkbox"/>	Breathing																																																																																											
<input type="checkbox"/>	Transportation	<input type="checkbox"/>	Changes in urination																																																																																											
<input type="checkbox"/>	Work/school	<input type="checkbox"/>	Constipation																																																																																											
<input type="checkbox"/>	Treatment decisions	<input type="checkbox"/>	Diarrhea																																																																																											
<b>Family Problems</b>		<input type="checkbox"/>	Eating																																																																																											
<input type="checkbox"/>	Dealing with children	<input type="checkbox"/>	Fatigue																																																																																											
<input type="checkbox"/>	Dealing with partner	<input type="checkbox"/>	Feeling swollen																																																																																											
<input type="checkbox"/>	Ability to have children	<input type="checkbox"/>	Fevers																																																																																											
<input type="checkbox"/>	Family health issues	<input type="checkbox"/>	Getting around																																																																																											
<b>Emotional Problems</b>		<input type="checkbox"/>	Indigestion																																																																																											
<input type="checkbox"/>	Depression	<input type="checkbox"/>	Memory/concentration																																																																																											
<input type="checkbox"/>	Fears	<input type="checkbox"/>	Mouth sores																																																																																											
<input type="checkbox"/>	Nervousness	<input type="checkbox"/>	Nausea																																																																																											
<input type="checkbox"/>	Sadness	<input type="checkbox"/>	Nose dry/congested																																																																																											
<input type="checkbox"/>	Worry	<input type="checkbox"/>	Pain																																																																																											
<input type="checkbox"/>	Loss of interest in usual activities	<input type="checkbox"/>	Sexual																																																																																											
<input type="checkbox"/>	<b>Spiritual/Religious Concerns</b>	<input type="checkbox"/>	Skin dry/itchy																																																																																											
		<input type="checkbox"/>	Sleep																																																																																											
		<input type="checkbox"/>	Substance use																																																																																											
		<input type="checkbox"/>	Tingling in hands/feet																																																																																											
<p>No distress</p>	<p>Other Problems: _____</p>																																																																																													

Image from NCCN distress thermometer version 2.2018

## ANNEXURE 2

### Calming techniques:

#### *Breathing Exercise:*

1. Ask to sit in a comfortable position
2. Suggest to focus gently on their breathing
3. Suggest to put one hand on the belly just below the ribs and the other hand on the chest
4. Ask to take a deep breath in through the nose, and to focus how the hands on the belly goes in (Chest should not move)
5. Ask to breathe out through the mouth (as if you were whistling). Feel how the hands on the belly goes out, and hands on the chest goes in
6. Ask to do this breathing 3 to 10 times
7. Ask them to notice how they feel at the end of the exercise

#### *Mindful Observation*

It is a psychological process of purposefully bringing one's attention to the present moment without any judgment. It can be used as a technique to calm down anxiety, and can also be used as a distraction method to relieve anger. The exercise is as follows:-

Firstly, suggest noticing **5** things that the person **can see**. Try to avoid things that we usually notice, try to become aware of the environment.

Secondly, notice **4** things that the person **can feel**. Suggest bringing attention to something the person feels, such as the texture of the dress, the surface of the table he/she is sitting, the air that he /she is breathing, etc.

Thirdly, suggest noticing **3** things that he/ she can **hear**. Listen and notice for things in the background such as the chirping of birds etc.

Fourthly, suggest noticing **2** things that the person can **smell**. Suggest bringing the attention of the scent, or smell of food, etc. Finally, suggest focusing attention on **1** thing that the person can **taste**, such as to take a sip of water, etc.

## ANNEXURE 3

### Sleep hygiene techniques

Sleep routine: Set fixed times for sleeping and waking up (daily, whether it is weekend or weekdays). Curb the tendency to extend sleep time.

Go to sleep when you're sleepy: Go to bed when you feel sleepy at night. If possible, try to associate bed with sleep and not as a place for watching movies/ reading and other leisure activities. Avoid staying in bed turning and tossing. If not falling asleep within 30 minutes get out of the bed, read something or hear calming music and then go back to bed when you feel sleepy.

Restrict screen usage an hour before bedtime, and avoid using the phone or watching TV at least half an hour before bedtime.

Controlling stimulant use: Avoid intake of stimulants such as coffee, carbonated drinks 4-6 hours before bed. Have a warm glass of milk as it can induce sleep. Also, avoid heavy meals before bed.

It's better to avoid day time naps. If it's unavoidable, it should not be more than 30 minutes and should be preferably before 3 pm.

Avoid watching clock: Repeatedly checking the clock during the night can wake you up more. It also increases anxious thoughts related to the inability to sleep, which can further worsen the sleep disturbance.

Exercise: Walking around the office, gardening, etc. can keep you active during the day and can also help to get good sleep at night.



Modify your environment: Control unnecessary noise, do not keep lights ON while sleeping.

Relaxation therapy: The practices of various relaxation therapy can reduce anxiety or worries and can induce sleep, the commonly used techniques are meditation, breathing exercise.

Sleep diary: Maintain a sleep diary. It will help you evaluate your own sleep.

## References

- Zhang J, Wu W, Zhao X, Zhang W. Recommended psychological crisis intervention response to the 2019 novel coronavirus pneumonia outbreak in China: a model of West China Hospital. *Precision Clinical Medicine*. 2020 Mar 25;3(1):3–8.
- Wang C, Pan R, Wan X, Tan Y, Xu L, Ho CS, et al. Immediate Psychological Responses and Associated Factors during the Initial Stage of the 2019 Coronavirus Disease (COVID-19) Epidemic among the General Population in China. *Int J Environ Res Public Health* [Internet]. 2020 Mar [cited 2020 Apr 3];17(5). Available from: <https://www.ncbi.nlm.nih.gov/pmc/articles/PMC7084952/>
- Li W, Yang Y, Liu Z-H, Zhao Y-J, Zhang Q, Zhang L, et al. Progression of Mental Health Services during the COVID-19 Outbreak in China. *Int J Biol Sci*. 2020;16(10):1732–8.
- Ho CS, Chee CY, Ho RC. Mental Health Strategies to Combat the Psychological Impact of COVID-19 Beyond Paranoia and Panic. 2020;6.
- Brooks SK, Webster RK, Smith LE, Woodland L, Wessely S, Greenberg N, et al. The psychological impact of quarantine and how to reduce it: rapid review of the evidence. *The Lancet*. 2020 Mar 14;395(10227):912–20.
- Cutillo A, O’Hea E, Person S, Lessard D, Harralson T, Boudreaux E. NCCN Distress Thermometer: Cut off Points and Clinical Utility. *Oncol Nurs Forum*. 2017 May 1;44(3):329–36.
- Remote Psychological First Aid during the COVID-19 outbreak Interim guidance – March 2020 - World [Internet]. ReliefWeb. [cited 2020 Mar 31]. Available from: <https://reliefweb.int/report/world/remote-psychological-first-aid-during-covid-19-outbreak-interim-guidance-march-2020>
- Myth busters [Internet]. [cited 2020 Mar 31]. Available from: <https://www.who.int/emergencies/diseases/novel-coronavirus-2019/advice-for-public/myth-busters>
- Middleton H, Shaw I, Hull S, Feder G. NICE guidelines for the management of depression. *BMJ*. 2005 Feb 5;330(7486):267–8.
- Winston A, Rosenthal RN, Pinsky H, introduction to supportive psychotherapy, American Psychiatric Publishing, Inc;2004
- Huremovic D, editor. *Psychiatry of pandemics: A Mental Health Response to Infection Outbreak*. Springer; 2019 May15

# Spiritual care in COVID-19 pandemic – Supporting document

*Dr. Odette Spruijt, Dr. Seema Rao, Dr. Chitra Venkateswaran*

- Spirituality is a core expression of being human and relates to the way we all find meaning and purpose in our lives and our experience of the transcendent. Our spirituality is expressed in being connected to others, to nature, to the sacred dimension of our life 1. As people, we need to maintain a connection to ourselves, to what makes us whole and sustained.
- It is useful to remember that faith and other individual value systems are a means to attain/pursue spirituality. Religion is not synonymous with spirituality and every human being can go through spiritual crises despite belief in God.
- In a pandemic, being and expressing this connection is deeply impacted. Losing our sense of self can happen when there is great uncertainty and when our usual practices, roles, daily habits are removed. Due to the need to stay at home and avoid social gatherings, we may no longer visit our places of worship, be physically with those we love, mingle with others in markets, community groups, sporting teams, schools and places of work. We may experience deep loneliness and distress when those aspects of our lives, which usually provide fulfillment and meaning, stop.
- This distress may be felt very deeply when someone we love, or when we are ill with COVID-19 and unable to be visited because they are in isolation. We may find we cannot visit elderly parents in aged care or at home, for fear of passing on the virus to them. Our usual human connectedness is obstructed.
- Our spiritual expression may need to move to a more interior and profound sense of connectedness, which provides courage and compassionate energy. Those who are health care responders need this courage to face the challenges and fears of being exposed to the virus in the workplace and being a source of calm and confidence for others. Those who cannot leave the home need this courage to resist panic and promotion of fear, to take stock and offer what is possible within the confines of the situation. Those who are ill need to find an inner comfort even when separated from those they love and this may come from within but also for some from a relationship with the transcendent. We know that difficult times in life can encourage us to review our priorities and purpose and can be a time of spiritual growth as well as struggle.
- Each person will have a different vehicle to find this sense of wholeness and courage. Devoting time to this dimension through acts of service, in simple and quiet reflection, in prayers of faith practices, is of great value personally and for those with whom you live and interact.

## Questions often asked

<ul style="list-style-type: none"><li>• Why me?</li><li>• What did I do to deserve this?</li><li>• I have been good, then why?</li><li>• What is the point of living like this?</li><li>• What is the value of my achievements?</li></ul>	<ul style="list-style-type: none"><li>• Is there a God?</li><li>• Why did God do this to me?</li><li>• Why does God make me suffer like this?</li><li>• Is this a punishment for any sins?</li><li>• Is there life after death?</li></ul>
---	---

Some strategies are given below: These are mainly related to an individual's need, about presence, being non-judgmental, relational and intentional focusing on connectedness.

### Connect Inwards

To Self:

- Spend time in quiet prayer/meditation/reflection/stillness each morning
- Look at your home and think about what you no longer need, or what changes you can make to simplify your life and surroundings
- Taking time to read, do craftwork, other home-based activities
- Think about what you want in terms of medical care, if you become very ill with COVID or other illness and write down your wishes, so that family and medical teams understand your values and priorities. This helps you to reflect on your life and values also.

### Connect outwards

To Others:

- Using social media apps such as Whatsapp, zoom, facetime to connect to the people you love. An example might be reading a story to, or saying goodnight to your grandchildren every night, using one of these apps.
- Donating time, finances, and/or expertise to help people in need. There are many stories of people suffering due to the lockdown, lacking food or basic necessities. Identify an organization / group working to meet these needs and offer help.

#### To Nature:

- Spend time in a garden
- Planting and caring for indoor plants
- Putting out water for birds, feeding dogs and cats/ other pets or animals deprived of food and water
- Take time to feel the sun, feel the breeze in your terrace, balconies, courtyard

#### Connect upwards

- Relating to God and religion. Chanting, rituals, fasting are various ways in which one can re-establish the connectedness to God.
- Connecting back to one's values and beliefs, practicing compassion and altruism helps one to find meaning and purpose in life
- The universe, cosmos, larger dimension of life on earth

#### References:

- Steihauser KE, Fitchett G, Handzo GF, Johnson KS, Koenig HG, Pargament KI, et al. State of the Science of Spirituality and Palliative Care Research Part I: Definitions, Measurement, and Outcomes. J Pain Symptom Manage. 2017

# Palliative Home Care in times of Covid-19 & Future Pandemics

*Dr. Biju Raghavan*

## **Palliative Care during 'Normal Times':**

Palliative Home Visits would be done by a team consisting of a Palliative Physician, Palliative Nurse, Nursing Assistant, Medical Social Workers, and Physiotherapist. Most Palliative Care Teams are supported to varying degrees by a team of volunteers who provide much needed voluntary support to not only the team but directly to the patients and their families. The constitution of the team may vary based on availability and need.

Patients are either financially or physically constrained which becomes a barrier to accessing regular medical consultations. They may also have an incurable chronic debilitating illness and do not derive any benefit from a continued hospital stay but still need continued care.

The usual cohort of patients seen during Palliative Home care would be:

1. Patients Terminally ill with End-stage cancers/ Organ Failure etc. End of Life Care as feasible in the home environment is provided.
2. Patients with distressing symptoms like Pain, Breathlessness, etc. (Cancers/ Organ Failures/ Post Trauma/ Post Surgery, etc.). Symptom relief is provided.
3. Patients Bedridden with Chronic illnesses/ injury (Traumatic Spine or Brain injury/ Neurological illness – CVD, MND, Dementia, etc./ Respiratory illness – COPD, ILD, etc./ Cardiac illness – CHF, etc.)
4. Elderly Patients Bedridden with debility of age and multiple co-morbidities.

Apart from symptom control, all patients and their families are also provided with psycho-socio-spiritual support as needed and as feasible by the team of professional Palliative Care providers and volunteers.

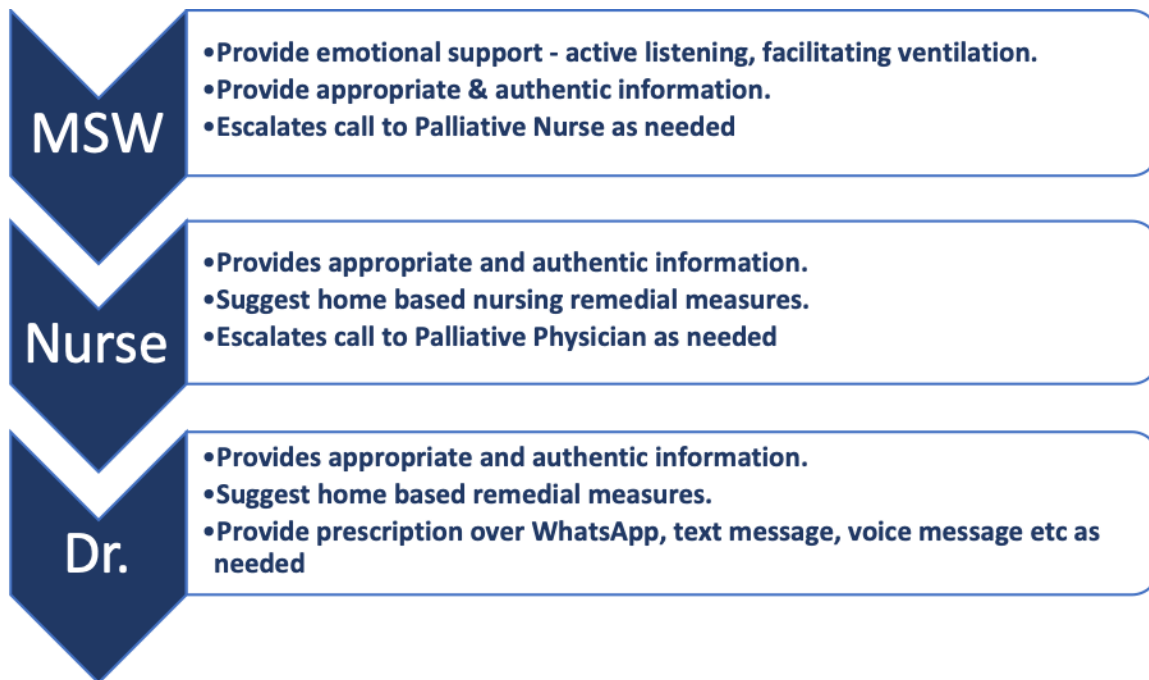
In view of the highly infectious nature of Covid19, the National & State Governments have declared a National Lockdown & State Lockdown respectively. Considering the same, Palliative Home Care services (Govt., Pvt. & NGOs.) will have to consider making appropriate changes in the pattern of their services. This should be seen in the best interest of the patients, their families & the Palliative Care providers as well as their families.

## **'Virtual Home Visits': Minimizing the need for Physical Home Visits:**

Phone consultation, messages, WhatsApp video chats, Zoom video chats & Telemedicine (where available) to be used for 'Virtual Home Visits'

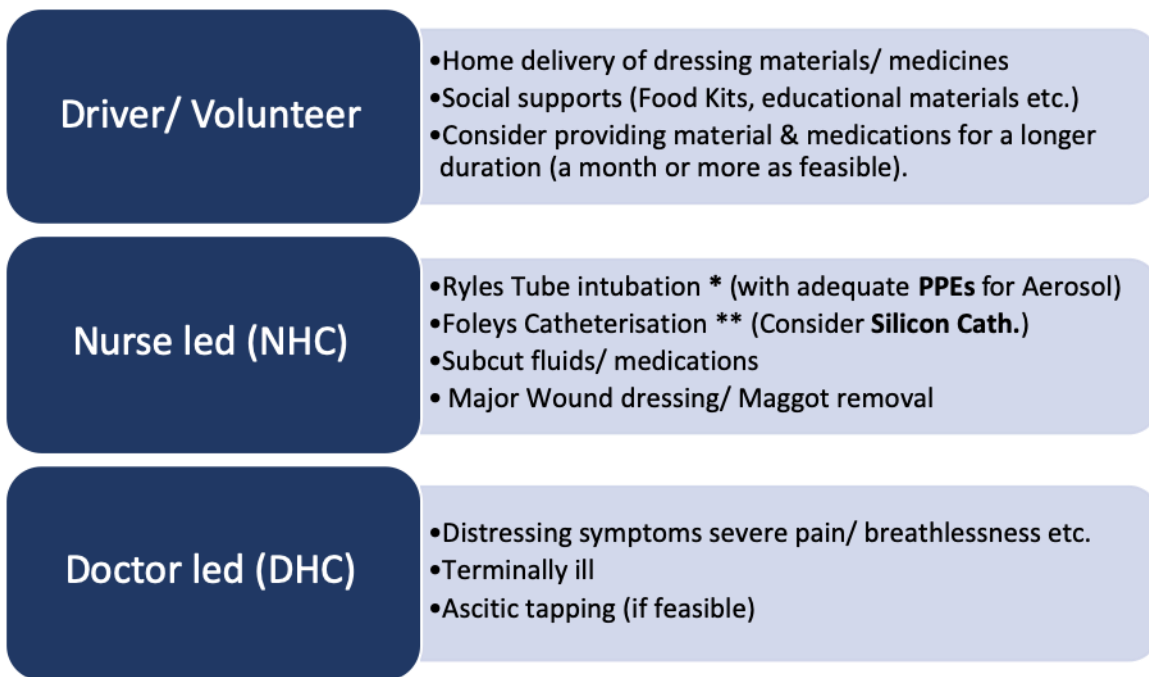
Make regular, periodic 'Virtual Home Visits' to all the registered Palliative Home Care patients.

New patient requests for registration into Palliative Home Care also to be managed by 'Virtual Home Visits' as much as possible.



Indications for Palliative Home Care 'Physical Visit':

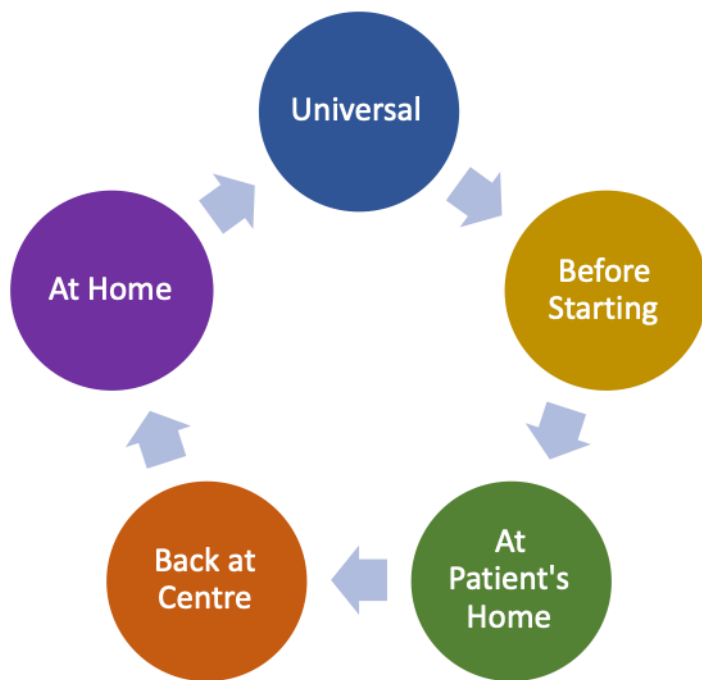
- 8) When access to Palliative Care IP services is not available or not accessible.
- 9) When access to a Hospital where Palliative Care phone consultation is also not possible



Ryles Tube intubation is expected to produce aerosol and it is advisable to don adequate PPEs for the same. In the absence of which patient should be taken to a hospital where facilities for the same are available.

\*\* Silicon Catheters are expensive compared to regular Foleys Catheter, however as it needs to be changed only once in 3 months, it will be convenient to the patient and family as well as more protective to the Palliative Nurse because of less frequency of exposure.

### Precautions to be adopted for Palliative Home Care 'Physical Visit'



#### 1. Universal Precautions:

1. All team members should be familiar with universal precautions (handwashing, wearing and removing masks, gloves, donning & doffing PPEs, etc.)
2. A 'Spotter' to be designated among the team members who will help the other team members to sanitize, wear & remove PPEs (Gloves, Face Shield, Goggles, apron, etc.). The Spotter will spot any errors in maintain 'Universal Precautions' by any of the team members and help rectify if any. The spotter will not be coming in direct contact with the patient or family and hence will not be wearing PPE. The spotter should be trained in PPE guidelines.
3. The Home Care Vehicle should be fitted with spill-proof Bio-hazard Bins (Yellow & Red) to carry back bio-hazards back to the centre (Hospital/ Hospice) for proper disposal.

## 2. Before Starting:

- a) Call the patient's home to confirm their presence.
- b) Sanitize the interiors of the vehicle with Virex, Lysol or other available surface disinfectant sprays.
- c) Use the vehicle only after a minimum 10 minutes to allow the disinfectant to act.
- d) Home Care Kit (Bag, Bio-medical equipment) to be disinfected with Bacillol or similar alcohol-based quick-acting surface disinfectant Spray
- e) Confirm adequate availability of hand sanitizers, surgical masks, gloves & other PPEs, etc. in the vehicle.
- f) Confirm availability of spill-proof Biohazard Bins (Red & Yellow) & biohazard bags (Red & Yellow) to bring back biohazard materials to the hospital or Palliative Unit for the same prescribed disposal.
- g) Puncture-proof container for Sharps.
- h) Only essential team members to travel.
- i) Only essential team members enter the patient's home.
- j) All team members should empty their bowels and bladders before starting for home care.
- k) Sanitize hands before entering the vehicle.
- l) Since social distancing is not possible inside the vehicle, all team members wear a surgical mask.
- m) Ensure all the team members have Photo ID proof as required by lockdown rules.
- n) Carry drinking water and some snacks as having tea break on the way would not be possible.
- o) A uniform for the team members is recommended for reasons of personal hygiene as well as the safety of family members of the team members.

## 3. At the Patient's Home:

- a) Team leader to explain to patient & family about our need to wear masks, gloves, etc. Also to explain the need to maintain social distancing (6 feet/ 2 meter); before entering their home.
- b) Spotter to help with sanitizing hands before entering the patient's home
- c) Maintain social distancing when talking to patient & family (except on physical examination of patient).
- d) Audio record documentation. File documentation can be done once back at Hospital/ Centre.
- e) For any procedure - wear gloves & additional PPE (face shield, goggles, apron, etc.) as needed, with the help of the spotter.
- f) Spend only absolutely essential time at the patient's home.
- g) Remove PPEs slowly with the help of the spotter.
- h) Put all biohazards in appropriate bags (Red & Yellow) and place the bags in spill-proof appropriate bins (Red & Yellow) in the vehicle.
- i) Disinfect all bio-medical equipment (BP apparatus, pulse oximeter, thermometer, glucometer, etc.) with Bacillol or similar alcohol-based quick-acting surface disinfectant Spray.
- j) Sanitize your hands before entering the vehicle.
- k) The process to be repeated at each patient's home.

## 3. Back at Hospital/ Centre.

- a) Remove the biohazards bags for safe and appropriate disposal.
- b) Sanitize hands after getting out of the vehicle.
- c) Sanitize the interiors of the vehicle with Virex, Lysol or available surface disinfectant sprays.
- d) If you have a uniform, change back to personal civilian clothes before going home.
- e) If possible, have a bath before going home



#### 4. Back at Home/ Hostel

- a) Remove footwear at the entrance. Do not bring it inside your home. Use the same pair daily for work.
- b) Stand in a tub with a soap solution which at least covers your feet. Stay for 2 minutes. Then move inside your home.
- c) Put non-electronic items (pen, keys, glasses, etc.) in a separate soap solution for 2 minutes. Then remove, rinse and place at designated places. Avoid mixing them with your other household items.
- d) Electronic items (mobile phone) or other items which can't be put in soap solution should be wiped with sanitizer making sure not to damage the equipment.
- e) Remove your clothes and put them in a separate soap solution/ Washing Machine. Wash your clothes separately. Do not mix with other family member's laundry.
- f) Have a proper bath before interacting with your family members.
- g) Sanitize with a sanitizer door-knobs, switches, and all possible surfaces that you are likely to come in contact with at home, at least ones a day.

# End-of-life care at Home for COVID-19 patients

*Dr. Sunil Kumar M M*

If there are no beds available at government facilities, end –of –life care could be done at home

How it can be done:

1. Except for the patient, all others need to vacate the house/ shifted to another room
2. The personnel trained in COVID-19 visits the home, and assess the sufferings. All the protective equipment should be provided and the person should be trained in using this equipment.
3. Start a subcutaneous line/ IV line
4. Manage the suffering as per the attached protocol for breathlessness/ agitation/ secretion.
5. Continuous infusion would be the preferred method to manage the suffering. A continuous infusion can be given by elastomeric pumps and if that is not available, mix the needed medication in 500 ml Normal Saline and given as a continuous infusion. Preferably infusion should last for 48 hours.
6. Loaded syringes of Morphine/ Haloperidol/ Midazolam are given to trained personnel.
7. Phone number of the health care professionals to be given to the trained personnel & family member for any calcifications and titration of the infusion if required
8. The recruited volunteers who have training in COVID-19 can visit the family once in a day to provide psycho-social support
9. Food has to be provided to the family members from a community kitchen
10. When the patient dies, the dead body has to be buried as per WHO guidelines with the help of local health authorities.
11. The house needs to be disinfected as per the standard before the family can use it.

## Requirements

1. All the PHCs, CHC's and THQ's should be provided with Inj. Morphine, Inj. Haloperidol and Inj. Midazolam for this purpose.
2. Personal protective equipment.
3. Waste segregation bags and bins.
4. Waste disposal system

## Links for FAQ's and Myth Busters

*Dr. Poornima Sunder, Anupama Prabhu, Uma Parameswaran*

<https://www.mohfw.gov.in/pdf/FAQ.pdf>

<http://people.iiti.ac.in/~medical/mythbusters.php>

<https://www.paho.org/en/health-emergencies/social-media-postcards-myth-busters-covid-19>

<https://www.who.int/emergencies/diseases/novel-coronavirus-2019/advice-for-public/myth-busters>

<http://dhs.kerala.gov.in/photo-gallery/>

<https://www.cdc.gov/coronavirus/2019-ncov/faq.html>

<https://www.fda.gov/emergency-preparedness-and-response/coronavirus-disease-2019-covid-19/coronavirus-disease-2019-covid-19-frequently-asked-questions>

### **HELPLINES:**

**DISHA, 1056 (COMMON HELPLINE TO CONNECT YOU TO ALL THE OTHER GOVERNMENT SERVICES)**

<https://coronahelpdeskekm.deienami.com/>

**District control room numbers Ernakulam ( COVID-19 HELPLINE)**

Control Room Kakkanad - 0484 2368802

Other numbers:

0484- 2428077, 0484 2424077

0484 2426077

0484 2425077,0484 2422077

**Guest Worker Helpline:**

State Level Call Center Number (Toll Free-155214) and 1800 425 55214

Ernakulam district: 0484 2421277, 0484 2422277

### **De-addiction Services**

Call for Counseling Toll-Free Number -14405

Southern Region- 9400022100, 9400033100

Central Region- 9188520198, 9188520199

Northern Region - 9188468494,

Tele Helpline for Medical Help

Ernakulam: IMA Control Room No:- 7593045730

### **Helpline for People with Hearing Impairment**

Thiruvananthapuram, Kollam, Alappuzha, and Pathanamthitta Districts: 9249505723, Kottayam, Idukki, Ernakulam, Thrissur and Palakkad districts are: 7994548133, Malappuram, Kozhikode, Wayanad, Kannur, and Kasaragod Districts: 7025065488.

### **Helpline for Differently abled**

Dr. P T Baburaj:-9495213248

Dr. N N Henna:- 9995582671

### **Helplines for Pregnant women:**

Should call the consulting doctor or Disha helpline (1056) and should take advice.

For pregnant women or mothers of infants- 8884426444 (9 am to 4 pm)- Maternal and Infant Mental Health services, IMHANS, Kozhikode.

**Community kitchens:** <http://kudumbashree.org/pages/826>

### **Suicide helplines:**

DISHA: 1056, Kerala Government-run Helpline, Available 24 hours

MAITHRI, Hotline: +91 (0)484 239 6272

Website: [maithrikochi.org](http://maithrikochi.org)

Hours: Mon, Tues, Wed, Thurs, Fri, Sat, Sun: 10:00 - 20:00

SNEHA

Hotline: +91 (0) 44 2464 0050

Website: [snehaindia.org](http://snehaindia.org)

24 Hour service:

### **Helplines for vulnerable population:**

**Women Helpline (Including Domestic Violence): 1091** - For more details kindly visit: [www.swd.kerala.gov.in](http://www.swd.kerala.gov.in)

LGBTIQ community helpline - **1800 425 2147**

For schemes pensions etc related to specially-abled people: **Anuyatra helpline, 1800 12**



**Institute of Mental Health and Neurosciences (IMHANS), Kozhikode**  
 (An autonomous institution under the Government of Kerala)  
[www.imhans.ac.in](http://www.imhans.ac.in)

കോവിഡ് 19 ബാധ നിലനിൽക്കുന്ന സാഹചര്യത്തിൽ രോഗികൾക്കും സമ്പർക്ക പട്ടികയിൽ ഉൾപ്പെട്ടവർക്കും, കുടുംബാംഗങ്ങൾക്കും മറ്റ് പൊതുജനങ്ങൾക്കും സേവനങ്ങൾ നൽകുന്ന സന്നദ്ധ പ്രവർത്തകർ, ഡോക്ടർമാർ, നഴ്സുമാർ, കൗസിലർമാർ, മറ്റ് പാരാമെഡിക്കൽ, പാരാലിഗൽ വൊളന്റിയർമാർ, പോലീസുകാർ, ജേർണലിസ്റ്റുകൾ തുടങ്ങിയ ഏതൊരു സേവനദാതാക്കൾക്കും മാനസിക പിന്തുണ ലഭ്യമാക്കുന്നതിനു വേണ്ടി രാവിലെ 9 മുതൽ രാത്രി 9 വരെയുള്ള സമയത്തു 28 പേരടങ്ങിയ കൗൺസിലർമാരുടെ വിദഗ്ധ സംഘത്തിന്റെ സേവനം ലഭ്യമാക്കിയിട്ടുണ്ട്.

Morning (9am - 3pm)	Evening (3pm - 9pm)
9188042307 (Malayalam, English)	7034056654 (Malayalam, English)
8921627756 (Malayalam, English)	6282862727 (Malayalam, English, Tamil)
8086959631 (Malayalam, English, Tamil)	8138012320 (Malayalam, English)
9544165859 (Malayalam, English)	9544244890 (Malayalam, English)
9061964343 (Malayalam, English, Tamil)	8848287721 (Malayalam, English, Tamil)
6238802712 (Malayalam, English, Hindi)	9633808327 (Malayalam, English)
9847831560 (Malayalam, English, Hindi)	9400617732 (Malayalam, English)
9747833774 (Malayalam, Arabic)	9567181538 (Malayalam, English, Tamil)
9072442904 (Malayalam, English)	8281948946 (Malayalam, English, Tamil)
9496810113 (Malayalam, Hindi English)	9645835758 (Malayalam, English)
9496699220 (Malayalam, English, Kannada, Tamil)	8137901130 (Malayalam, English, Tamil)
6238996063 (Malayalam, English)	9746596677 (Malayalam, Tamil)
9446768602 (Malayalam, Tamil, Hindi, English)	8592959697 (Malayalam, English)
9846202324 (Malayalam, English, Tamil)	9745454151 (Malayalam, Hindi, English)



**ഇന്ത്യൻ അസോസിയേഷൻ ഓഫ് ക്ലിനിക്കൽ സൈക്കോളജിസ്റ്റ് (കേരള ഘടകം)**  
 ജി.എ.സി.എസ്.ഐ. കോളിംഗ് സെന്ററിൽ വിറ്റിംഗിംഗ് 12-1955 പ്രകാരം  
 ജി.എ.സി.എസ്.ഐ. 199/10  
[www.clinicalpsychologistkerala.com](http://www.clinicalpsychologistkerala.com)

പ്രിയപ്പെട്ടവരേ, 24/03/2020

കോവിഡ് 19 പടരുന്ന സാഹചര്യത്തിൽ ഇന്ത്യൻ അസോസിയേഷൻ ഓഫ് ക്ലിനിക്കൽ സൈക്കോളജിസ്റ്റ് (കേരള ഘടകം) 24 മണിക്കൂർ പ്രവർത്തിക്കുന്ന ടെലി-സൈക്കോളജിക്കൽ സർവീസ് തുടങ്ങിയിരിക്കുകയാണ്. 57 പേർ അടങ്ങുന്ന ക്ലിനിക്കൽ സൈക്കോളജിസ്റ്റുകളുടെ ഒരു സംഘം ഇതിനായി സജ്ജമാക്കിയിട്ടുണ്ട്. കോവിഡ് 19 ന്റെ പ്രയാസത്തിൽ മാനസിക സമ്മർദ്ദം അനുഭവിക്കുന്ന എല്ലാവർക്കും ഞങ്ങളുടെ സംഘത്തിന്റെ സേവനം പ്രയോജനപ്പെടുത്താം. ഇതോടൊപ്പം ക്ലിനിക്കൽ സൈക്കോളജിസ്റ്റുകളുടെ ഫോൺ നമ്പറുകളും ലഭ്യമായ സമയവും ഇതോടൊപ്പം കൊടുക്കുന്നു. മലയാളത്തിനും ഇംഗ്ലീഷിനും പുറമെ ഏതാനും ചില ഭാഷകളിൽ കുടി സേവനം ലഭ്യമാണ്.

ആദരവോടെ  
 ഡോ. ബിജി. വി.  
 ജനറൽ സെക്രട്ടറി

രാവിലെ ( MORNING)	
9686568984	8am - 10am
9747900381	8am - 11am
9495422530	9am - 10am
9496613508	9am - 11am
9495626659	9am - 1pm
9447046768	10am - 11am
9847248898	10am - 11am
9495321687	10am - 11am
9748120411	10am - 1pm
+971508540630	10am - 1pm
9495245212	10am - 3pm
9539991643	11am - 1pm
9526838486	11am - 4pm

രാത്രി (NIGHT)	
9633702090	8pm - 9pm
9895477660	8pm - 10pm
9656422560	8pm - 10pm
9747001333	9pm - 11pm
9447664199	10pm - 11pm
9847704395	10pm - 12am

ഉച്ചയ്ക്ക് (AFTERNOON)		
9207288855	ഹിന്ദി, കന്നഡ, തമിഴ്	12pm - 2pm
+14163564280	For Keralites in Canadas	10am - 5pm
9633687674		1pm - 2pm
9495683913		2pm - 4pm
8547131534		2pm - 4pm
9605067527		2pm - 4pm
9739060758		2pm - 4pm
8547281985		2pm - 5pm
9447970639		3pm - 4pm
9746592893	ഹിന്ദി, തമിഴ്	3pm - 5pm
9446502650		3pm - 5pm
9447172619		3pm - 5pm
9605477393	തമിഴ്, കന്നഡ	3pm - 5pm
9447991601	ഹിന്ദി	3pm - 6pm
9686188660	തമിഴ്	3pm - 7pm
9446308746		4pm - 6pm
8157002878		4pm - 6pm
9496115302		4pm - 6pm
9746939529		4pm - 7pm
+639369536148		5pm - 7pm
8547448055		5pm - 6pm
8547508641	ഹിന്ദി, തമിഴ്	5pm - 6pm

വൈകുന്നേരം (EVENING)		
9497254996		6pm - 8pm
9995189867	ഹിന്ദി, തമിഴ്	6pm - 8pm
9447782084		6pm - 8pm
9846411634	ഹിന്ദി	6pm - 8pm
9496187500		6pm - 8pm
9746014387	തമിഴ്, തെലുങ്ക്, ഹിന്ദി	6pm - 8pm
9895442089		6pm - 8pm
8943134909		7pm - 8pm
9847134970		7pm - 8pm
9880418128		7pm - 9pm

അർദ്ധരാത്രി/പുലർച്ച (LATE NIGHT/ EARLY MORNING)		
8547131534	ബംഗാളി	12am - 2am
+971528109474	ഹിന്ദി	12am - 2am
(Zoom)	കന്നഡ, തമിഴ്	
7559016729		2am - 4am
9495106704	ഹിന്ദി	4am - 6am
9560970324	ഹിന്ദി, കന്നഡ, തമിഴ്	4am - 6am
9447631325		4am - 6am
9288081680	ഹിന്ദി, കന്നഡ, തമിഴ്	6am - 8am

## Links for Additional Reading

*Dr. Sunitha M Daniel*

- 1) Integrating palliative care and symptom relief into responses to humanitarian emergencies and crises: a WHO guide <https://apps.who.int/iris/handle/10665/274565>
- 2) Home care for patients with COVID-19 presenting with mild symptoms and management of their contacts. [https://www.who.int/publications-detail/home-care-for-patients-with-suspected-novel-coronavirus-\(ncov\)-infection-presenting-with-mild-symptoms-and-management-of-contacts](https://www.who.int/publications-detail/home-care-for-patients-with-suspected-novel-coronavirus-(ncov)-infection-presenting-with-mild-symptoms-and-management-of-contacts)
- 3) Recommendations for treatment of patients with COVID-19 from the palliative care perspective [https://www.dgpalliativmedizin.de/images/DGP\\_Handlungsempfehlung\\_palliative\\_Therapie\\_bei\\_COVID18\\_V2.0\\_English\\_version.pdf](https://www.dgpalliativmedizin.de/images/DGP_Handlungsempfehlung_palliative_Therapie_bei_COVID18_V2.0_English_version.pdf)
- 4) "COVID-19 and Palliative, End of Life and Bereavement Care in Secondary Care Role of the specialty and guidance to aid care" <https://apmonline.org/wp-content/uploads/2020/03/COVID-19-and-Palliative-End-of-Life-and-Bereavement-Care-22-March-2020.pdf>
- 5) COVID-19 rapid guideline: critical care in adults. <https://www.nice.org.uk/guidance/ng159>
- 6) National Hospice and Palliative Care Organisation, USA Communications on Coronavirus (COVID-19) <https://www.nhpco.org/coronavirus>
- 7) Cairdeas International Palliative Care Trust website has 11 symptom guidelines <https://cairdeas.org.uk/resources/core-resources/core-textbooks>
- 8) Worldwide Hospice Palliative Care Alliance <https://www.thewhpc.org/covid-19/resources>
- 9) International Association for Hospice and Palliative Care (IAHPC) <http://globalpalliativecare.org/covid-19/>
- 10) The British Medical Journal <https://www.bmj.com/coronavirus>
- 11) The Lancet <https://www.thelancet.com/coronavirus>
- 12) VitalTalk <https://www.vitaltalk.org/guides/covid-19-communication-skills/>
- 13) Social Media Facebook COVID-19 Palliative Care Providers <https://www.facebook.com/groups/645971766160403/>
- 14) And Twitter search with #Pallicovid
- 15) **Pallikare App** : [https://play.google.com/store/apps/details?id=org.karunashraya.pallikare&hl=en\\_IN](https://play.google.com/store/apps/details?id=org.karunashraya.pallikare&hl=en_IN) (Android) / <https://apps.apple.com/in/app/pallikare/id1423074474> ( iOS)